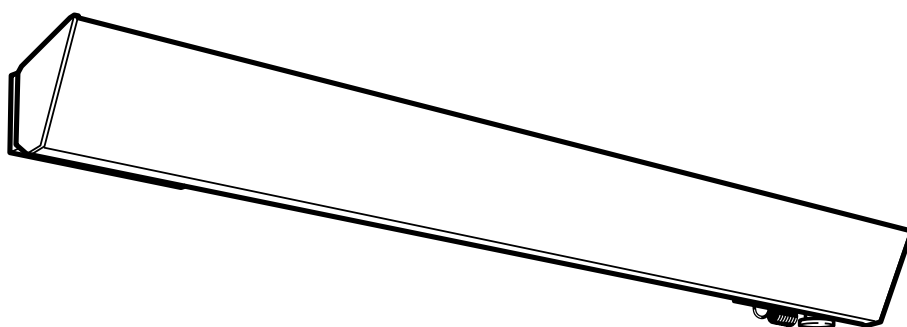


Original instructions

## **Thermoplus**



SE ... 5

GB ... 6

NO ... 7

FR ... 8

DE ... 9

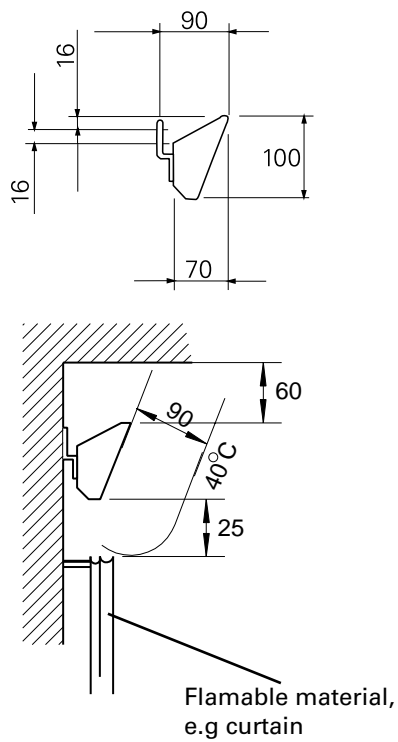
FI ... 10

IT ... 11

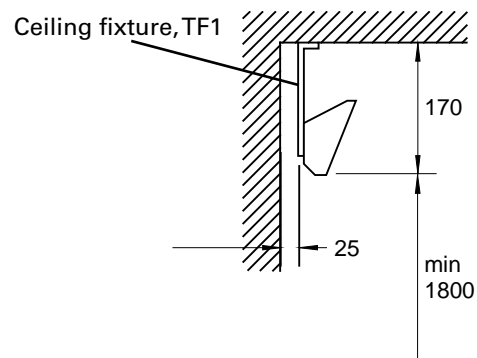
NL ... 12

RU ... 13

## Mounting on the wall

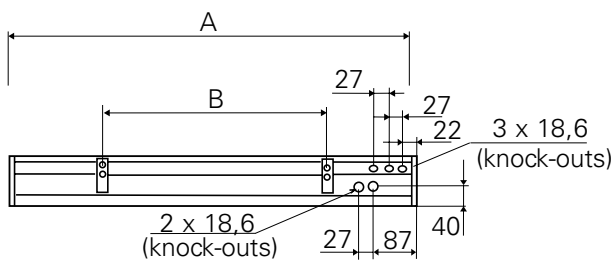


## Mounting on the ceiling



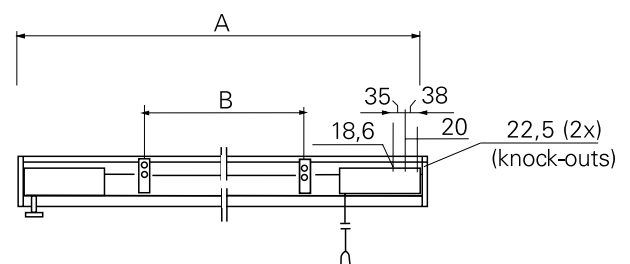
	Minimum mounting distance [mm]
Ceiling	60
Wall, long side of the unit	25
Flammable material	25
Floor	1800

## Dimensions type EC

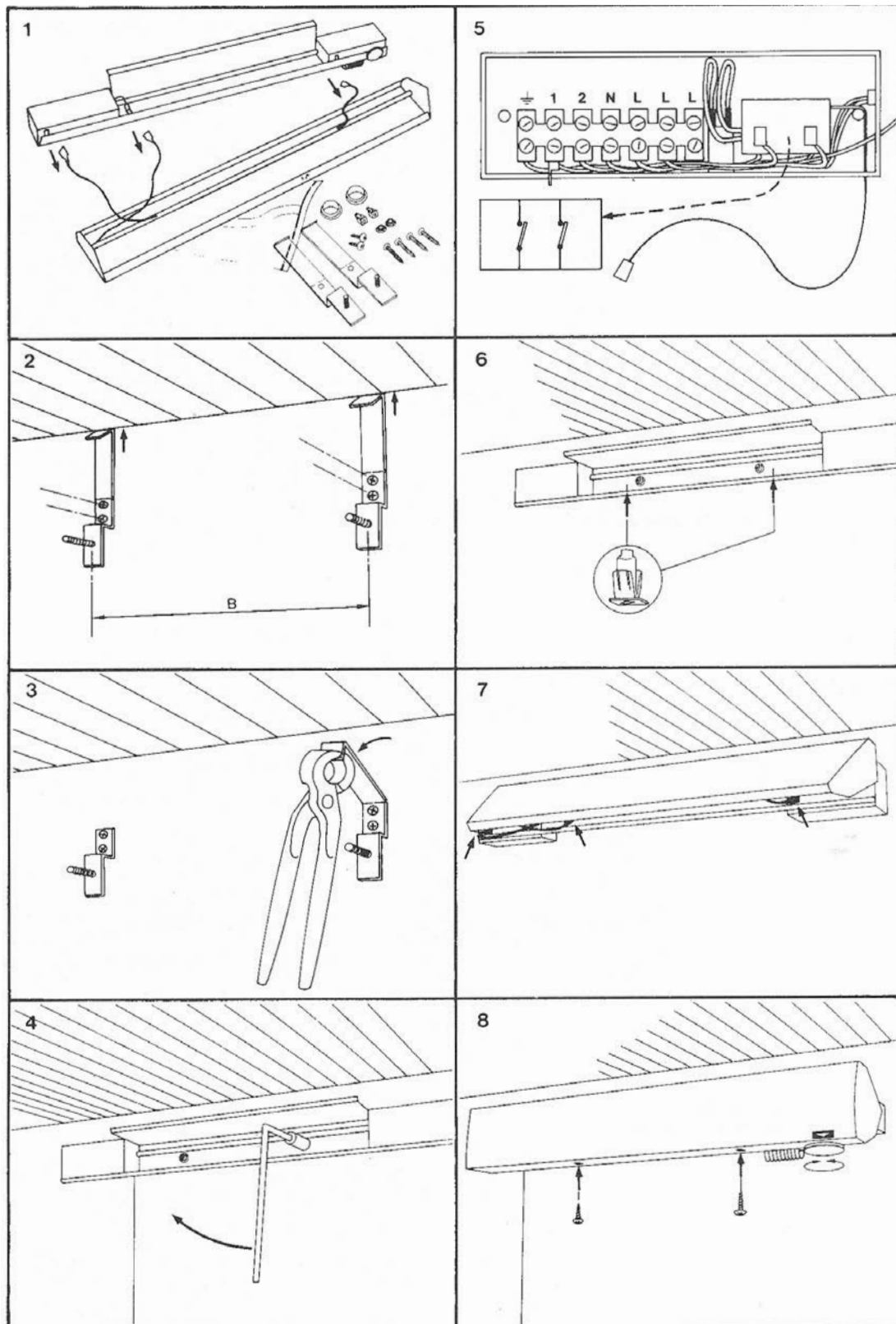


Type	A [mm]	B [mm]
EC450	1076	600
EC600	1505	900
EC750	1810	1200
EC900	2140	1800

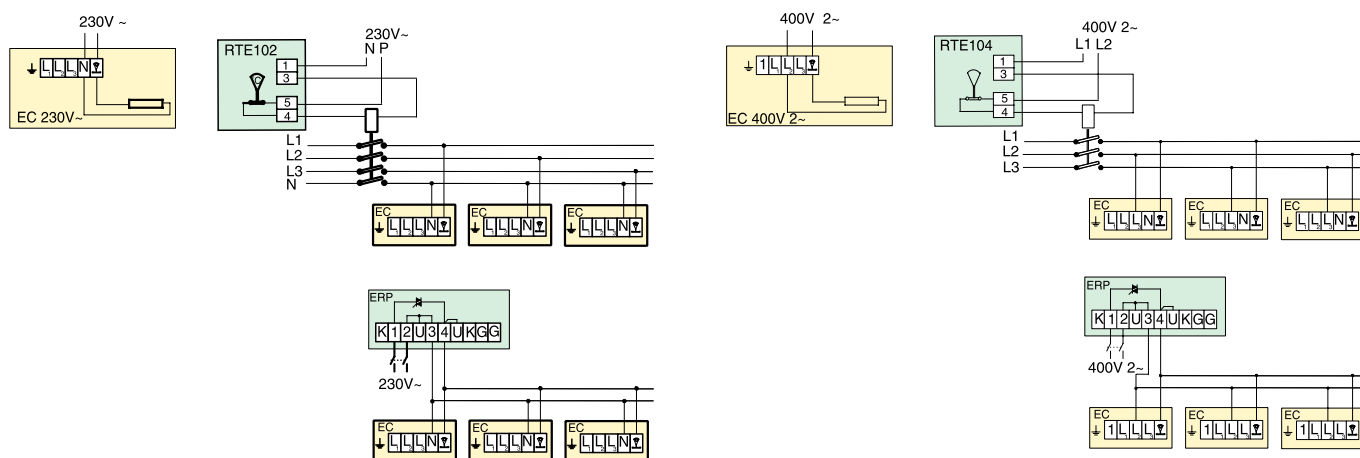
## Dimensions type ECV, ECVT



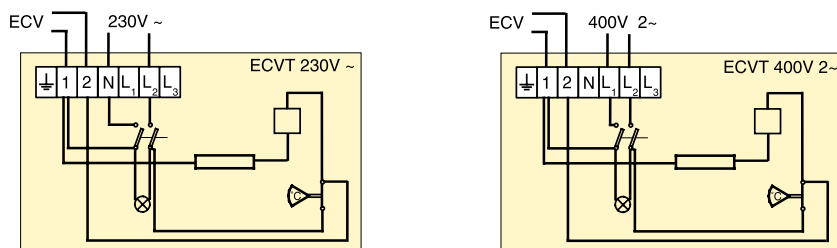
Type	A [mm]	B [mm]
ECV(T)300	870	400
ECV(T)550	1505	900
ECV(T)700	1810	1200



## Regulation with thermostat RTE(V) or electric heating regulator ERP



## Regulation with ECVT with built-in thermostat. ECV can be connected as slave device to ECVT.



## Mounting and operating instructions

The normal version of type EC is approved (IP20) for installation in dry rooms. The splash-proof version of type ECV and ECVT (IP44) is approved for installation, for example, in bathrooms, shower rooms and wet play areas, where there is no wet hose available.


The heater is fitted up against the coving and must not be covered by curtains or drapes etc. For best effect, the ceiling directly above the heater should be well insulated. If the heater is fitted away from the ceiling, the radiation effect is reduced.

The heater must not be fitted below a height of 1.7 m (70"). The installation should be carried out by a qualified electrician.

### EC

The heater is regulated by means of a separate room thermostat, which is mounted on an outer wall at approximately 1.7 m above floor level. Air to the heater is drawn through the thermostat, which thereby senses the temperature of the air in the room.

Thermoplus is supplied ready for connection, for example, via a switch.

If a Frico room thermostat regulates the heater (s), the upper connection  - L3 on the primary heater is removed. Refer to the wiring diagram on Page 4. Thermoplus is equipped with extra terminal board sections for further current distribution. A junction box is therefore not required.

### ECV -with two-pole control switch and thermostat

The heater is connected by a power switch. A warning lamp indicates that the heater is switched on. The thermostat is fitted with a calibrated scale.

### ECV

This heater is designed for slave connection to ECVT. The total output of ECVT and ECV must not exceed 3500 W at 220 V or 3800 W at 380 V. The master heater controls the output of the slave heaters.

### Start up (E)

When the unit is used for the first time or after a long period of disuse, smoke or odour may result from dust or dirt that has collected on the element. This is completely normal and disappears after a short time.

### Fitting

1. Remove the front plate, and detach the electrical connections from the back plate.
2. Fit the brackets to the wall below the coving. See Table B for distance between brackets. Allow 15 mm for heater expansion.
3. Break off the top spacing part of the brackets at the break mark.
4. Fasten the back plate to the brackets.
5. Extra terminal boards are provided in the heater connection box for slave heater connection (ECVT only) ECVT is fitted with a 2-pole circuit breaker. Any further circuit breaker is unnecessary.
6. Press the two plastic screw holders into place in the bottom flange of the backplate.
7. Re-connect the wiring to the front panel and hook it onto the top flange of the backplate.
8. Lower the front plate and screw into place via the two plastic screw holders. For the ECVT, set the thermostat at the required temperature.

### Maintenance

In all electrical heating appliances, small clicks can occur due to movement when the material expands and contracts with changes in temperature.





**Main office**

Frico AB  
Box 102  
SE-433 22 Partille  
Sweden

Tel: +46 31 336 86 00  
Fax: +46 31 26 28 25  
mailbox@frico.se  
www.frico.se

**For latest updated information and information  
about your local contact: [www.frico.se](http://www.frico.se)**