

CENTER OF GRAVITY AND WEIGHT DETAILS -EMPTY FRAME

Details	Center of Gravity in millimeters [Inches]			Weight kg [lbs]
	X-Distance	Y-Distance	Z-Distance	
UPS Frame (without Power Modules and Battery Modules)	260 [102.36]	767 [301.97]	362 [142.57]	182 [401.2]

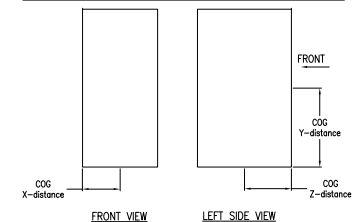
CENTER OF GRAVITY AND WEIGHT DETAILS

UPS SKU Number	RATING (kW)	No. Battery Strings Included	Center of Gravity in millimeters [Inches]			Weight kg [lbs]
			X-Distance	Y-Distance	Z-Distance	
GVSUPS10KB4HS	10	1	260 [102.36]	650 [256.9]	418 [164.57]	320 [705.5]
GVSUPS15KB4HS	15					
GVSUPS20KB4HS	20					
GVSUPS30KB4HS	30					
GVSUPS40KB4HS	40	2	260 [102.36]	650 [256.9]	418 [164.57]	460 [1014.12]
GVSUPS50KB4HS	50					
GVSUPS20K0B4HS	20	0	260 [102.36]	650 [256.9]	418 [164.57]	192 [423]
GVSUPS30K0B4HS	30					
GVSUPS40K0B4HS	40					204 [450]
GVSUPS50K0B4HS	50					

1 BATTERY STRING CONSIST OF 4 BATTERY MODULES

(WEIGHT OF ONE BATTERY MODULE IS APPROXIMATELY 70.5 lbs [32 kg])

MAINTENANCE BYPASS WITH TRANSFORMER CABINET- CENTER OF GRAVITY DETAIL



- NOTES:**
1. INSTALLATION SHALL COMPLY WITH ALL APPLICABLE NATIONAL, STATE AND LOCAL CODES.
 2. REFER TO PRODUCT DOCUMENTATION FOR ADDITIONAL DETAILS PRIOR TO INSTALLATION AND SITE PREPARATION WORK.
 3. ALL DIMENSIONS ARE IN MILLIMETERS [INCHES].
 4. CLEARANCE DIMENSIONS ARE MEANT FOR AIRFLOW AND SERVICE ACCESS ONLY. CONSULT WITH LOCAL SAFETY CODES AND STANDARDS FOR ADDITIONAL REQUIREMENTS IN YOUR AREA.
 5. ALL DIMENSIONS EXCLUDES SCREW PROJECTIONS OUTSIDE THE ENCLOSURE.
 6. CABLE ENTRY IS FROM REAR OF THE UNIT.
 7. OPERATING TEMPERATURE: 32°F TO 104°F [0°C TO 40°C].
 8. PROTECTION CLASS: IP20.
 9. COLOR: RAL 9003, GLOSS LEVEL 85%.
 10. THIS INFORMATION PROVIDES APPROXIMATE CENTER OF GRAVITY CALCULATION.
 11. DRILL/PUNCH HOLES IN PLATE. REMOVE PLATE FROM CABINET BEFORE DRILLING/PUNCHING.

THIS DRAWING AND SPECIFICATIONS HEREIN ARE THE PROPERTY OF SCHNEIDER ELECTRIC AND SHALL NOT BE COPIED, REPRODUCED OR USED IN WHOLE OR IN PART, AS THE BASIS FOR THE MANUFACTURE OR SALE OF ITEMS WITHOUT WRITTEN PERMISSION FROM SCHNEIDER ELECTRIC. THIS DRAWING IS BASED UPON LATEST AVAILABLE INFORMATION AND IS SUBJECT TO CHANGE WITHOUT NOTICE.

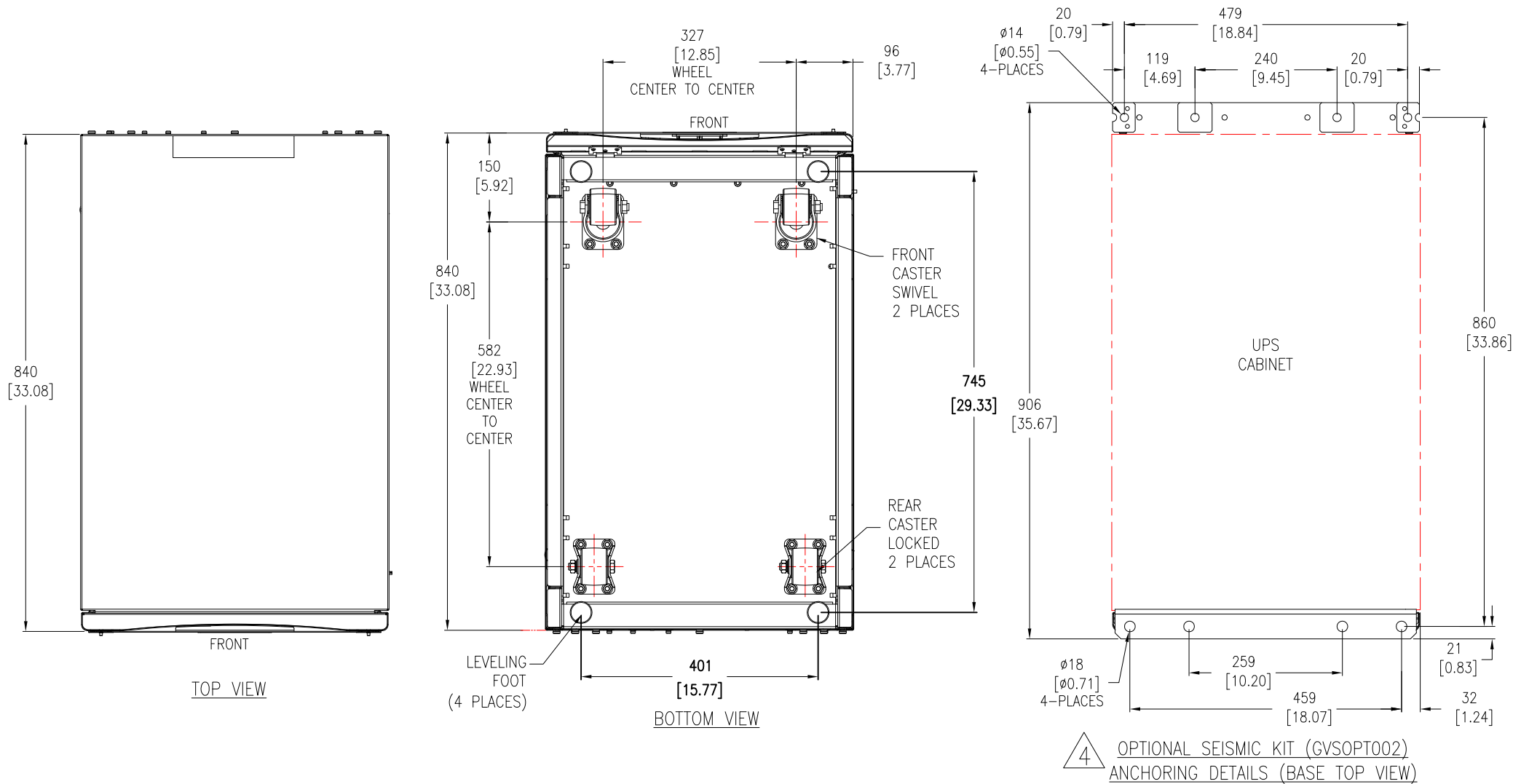
Schneider Electric

TITLE: Galaxy VS UPS 10-50kW
Input: 380/400/415V, 3PH, 50Hz, SINGLE/DUAL MAINS
Output: 380/400/415V, 3PH, 50Hz
GENERAL ARRANGEMENT

PROJECT: SUBMITTAL DRAWINGS SHEET 1 OF 4

DWG NO: GVS10K50HSAIO
DRAWN: BALA
ENGINEER: N R/ C B
APPROVED: J L

REV. 3
DATE: 10-JAN-20
DESCRIPTION: FIRST ANGLE PROJECTION



NOTES:

1. INSTALLATION SHALL COMPLY WITH ALL APPLICABLE NATIONAL, STATE AND LOCAL CODES.
2. REFER TO PRODUCT DOCUMENTATION FOR ADDITIONAL DETAILS PRIOR TO INSTALLATION AND SITE PREPARATION WORK.
3. ALL DIMENSIONS ARE IN MILLIMETERS [INCHES].
- △4. SEISMIC LOCATION : OPTIONAL SEISMIC KIT IS REQUIRED.
NON-SEISMIC LOCATION: NEED FRONT ANCHOR 870-63218
(REUSE THE TRANSPORT FRONT ANCHOR ONLY).

THIS DRAWING AND SPECIFICATIONS HEREIN ARE THE PROPERTY OF SCHNEIDER ELECTRIC AND SHALL NOT BE COPIED, REPRODUCED OR USED IN WHOLE OR IN PART, AS THE BASIS FOR THE MANUFACTURE OR SALE OF ITEMS WITHOUT WRITTEN PERMISSION FROM SCHNEIDER ELECTRIC. THIS DRAWING IS BASED UPON LATEST AVAILABLE INFORMATION AND IS SUBJECT TO CHANGE WITHOUT NOTICE.

Schneider Electric

TITLE: Galaxy VS
UPS 10-50kW
Input: 380/400/415V, 3PH, 50Hz, SINGLE/DUAL MAINS
Output: 380/400/415V, 3PH, 50Hz
TOP VIEW & ANCHORING

DWG NO: GVS10K50HSAIO


REV. 1

DRAWN: BALA 15-NOV-19
ENGINEER: N R/ C B 15-NOV-19

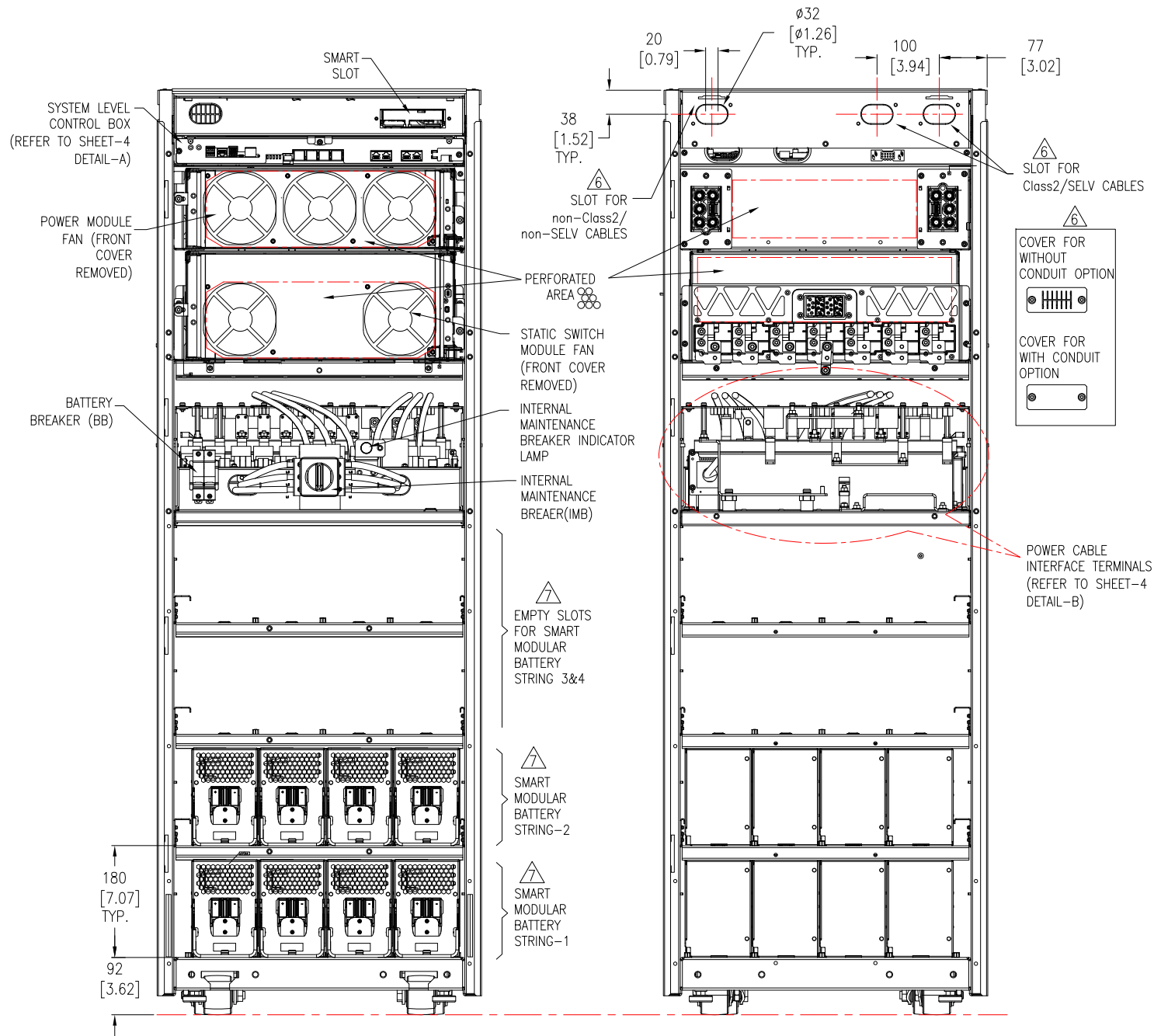
APPROVED: J L 15-NOV-19

PROJECT: SUBMITTAL DRAWINGS SHEET 2 OF 4

FIRST ANGLE PROJECTION



INTERNAL BATTERY STRING DETAILS			
UPS SKU NUMBER	RATING (kW)	AVAILABLE WITH DEFAULT NUMBER OF STRINGS	MAXIMUM NUMBER OF STRING CAPACITY
GVSUPS10KB4HS	10	1 (GVSBTH4)	4 (GVSBTH4)
GVSUPS15KB4HS	15		
GVSUPS20KB4HS	20		
GVSUPS30KB4HS	30	2 (GVSBTH4)	
GVSUPS40KB4HS	40		
GVSUPS50KB4HS	50		
GVSUPS20K0B4HS	20	0 (GVSBTH4)	
GVSUPS30K0B4HS	30		
GVSUPS40K0B4HS	40		
GVSUPS50K0B4HS	50		



INTERNAL FRONT VIEW 5

INTERNAL REAR VIEW

NOTES:

1. INSTALLATION SHALL COMPLY WITH ALL APPLICABLE NATIONAL, STATE AND LOCAL CODES.
2. REFER TO PRODUCT DOCUMENTATION FOR ADDITIONAL DETAILS PRIOR TO INSTALLATION AND SITE PREPARATION WORK.
3. ALL DIMENSIONS ARE IN MILLIMETERS [INCHES].
4. SOME STRUCTURAL DETAILS HAVE BEEN OMITTED FOR THE PURPOSE OF CLARITY.
- △5. FOR INTERFACE DETAILS REFER TO SYSTEM WIRING DIAGRAM GVS10K50HSAIO-WD.

THIS DRAWING AND SPECIFICATIONS HEREIN ARE THE PROPERTY OF SCHNEIDER ELECTRIC AND SHALL NOT BE COPIED, REPRODUCED OR USED IN WHOLE OR IN PART, AS THE BASIS FOR THE MANUFACTURE OR SALE OF ITEMS WITHOUT WRITTEN PERMISSION FROM SCHNEIDER ELECTRIC. THIS DRAWING IS BASED UPON LATEST AVAILABLE INFORMATION AND IS SUBJECT TO CHANGE WITHOUT NOTICE.

Schneider Electric

TITLE: Galaxy VS
UPS 10-50kW
Input: 380/400/415V, 3PH, 50Hz, SINGLE/DUAL MAINS
Output: 380/400/415V, 3PH, 50Hz
INTERNAL AND INTERFACE DETAILS

PROJECT: SUBMITTAL DRAWINGS SHEET 3 OF 4

DWG NO: GVS10K50HSAIO

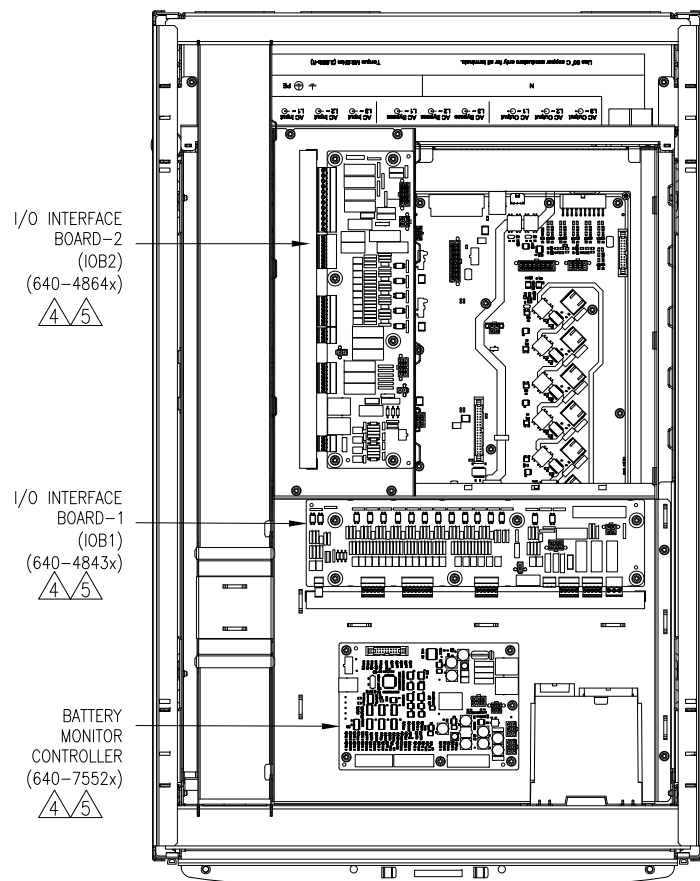
DRAWN: BALA 10-JAN-20

ENGINEER: N R/ C B 10-JAN-20

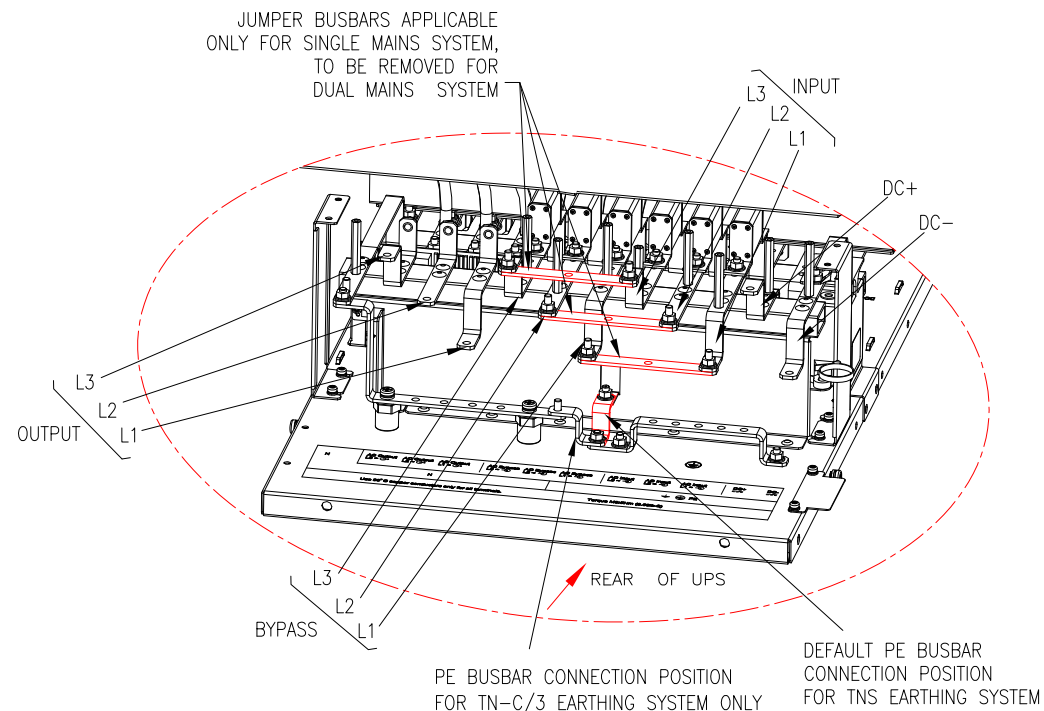
APPROVED: J L 10-JAN-20

REV. 1

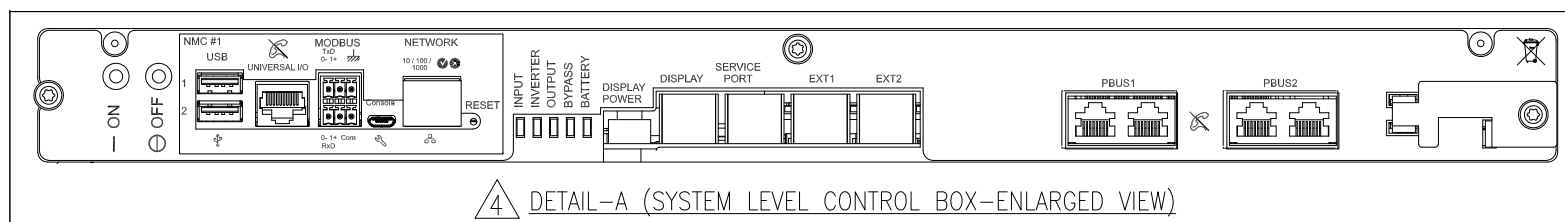
FIRST ANGLE PROJECTION



INTERNAL TOP VIEW



DETAIL-B (POWER CABLE INTERFACE)



4 DETAIL-A (SYSTEM LEVEL CONTROL BOX-ENLARGED VIEW)

NOTES:

1. INSTALLATION SHALL COMPLY WITH ALL APPLICABLE NATIONAL, STATE AND LOCAL CODES.
2. REFER TO PRODUCT DOCUMENTATION FOR ADDITIONAL DETAILS PRIOR TO INSTALLATION AND SITE PREPARATION WORK.
3. SOME STRUCTURAL DETAILS HAVE BEEN OMITTED FOR THE PURPOSE OF CLARITY.
- △4. FOR INTERFACE DETAILS REFER TO SYSTEM WIRING DIAGRAM GVS10K50HSAIO-WD.
- △5. FOR LATEST BOARD PART NUMBER CONTACT SCHNEIDER ELECTRIC.

THIS DRAWING AND SPECIFICATIONS HEREIN ARE THE PROPERTY OF SCHNEIDER ELECTRIC AND SHALL NOT BE COPIED, REPRODUCED OR USED IN WHOLE OR IN PART, AS THE BASIS FOR THE MANUFACTURE OR SALE OF ITEMS WITHOUT WRITTEN PERMISSION FROM SCHNEIDER ELECTRIC. THIS DRAWING IS BASED UPON LATEST AVAILABLE INFORMATION AND IS SUBJECT TO CHANGE WITHOUT NOTICE.

Schneider Electric

TITLE: Galaxy VS
UPS 10-50kW
Input: 380/400/415V, 3PH, 50Hz, SINGLE/DUAL MAINS
Output: 380/400/415V, 3PH, 50Hz
INTERNAL AND INTERFACE DETAILS
PROJECT: SUBMITTAL DRAWINGS SHEET 4 OF 4

DWG NO: GVS10K50HSAIO
DRAWN: BALA
ENGINEER: N R / C B
APPROVED: J L

REV: 0
14-OCT-19
15-OCT-19
15-OCT-19
FIRST ANGLE PROJECTION