

10 CENTER OF GRAVITY AND WEIGHT DETAILS							
SKU NUMBER	RATING (kW)	BATTERY STRINGS INCLUDED	MAXIMUM POSSIBLE BATTERY STRINGS	CENTER OF GRAVITY DATA—mm[Inches]			WEIGHT IN kg [lbs]
				X DISTANCE	Y DISTANCE	Z DISTANCE	
GVSUPS20KR0B5HS	20 N+1	0	5**	274	401.5	1213	266 [587]
GVSUPS30KR0B5HS	30 N+1			[10.79]	[15.81]	[47.76]	
GVSUPS40KR0B5HS	40 N+1						296 [654]
GVSUPS50KR0B5HS	50 N+1						
GVSUPS60KB5HS	60	3**		273	395.5	703	665 [1466]
GVSUPS80KB5HS	80			[10.75]	[15.59]	[27.63]	680 [1500]
GVSUPS100KB5HS	100						
GVSUPS60KB5HS	60	0		274	401.5	1213	281 [620]
GVSUPS80KB5HS	80			[10.79]	[15.81]	[47.76]	
GVSUPS100KB5HS	100						296 [654]

- NOTES:
1. INSTALLATION SHALL COMPLY WITH ALL APPLICABLE NATIONAL, STATE AND LOCAL CODES.
  2. REFER TO PRODUCT DOCUMENTATION FOR ADDITIONAL DETAILS PRIOR TO INSTALLATION AND SITE PREPARATION WORK.
  3. ALL DIMENSIONS ARE IN MILLIMETERS [INCHES].
  - △ 4. CLEARANCE DIMENSIONS ARE RECOMMENDED FOR AIRFLOW AND SERVICE ACCESS ONLY. CONSULT WITH LOCAL SAFETY CODES AND STANDARDS FOR ADDITIONAL REQUIREMENTS IN YOUR LOCAL AREA.
  5. ALL DIMENSIONS EXCLUDES SCREW PROJECTIONS OUTSIDE THE ENCLOSURE.
  6. CABLE ENTRY IS FROM REAR OF THE UNIT.
  7. OPERATING TEMPERATURE: 0°C TO 40°C [32°F TO 104°F].
  8. PROTECTION CLASS: IP20.
  9. COLOR: RAL 9003, GLOSS LEVEL 85%.
  - △ 10. THIS INFORMATION PROVIDES APPROXIMATE CENTER OF GRAVITY CALCULATION.
  - △ 11. DRILL/PUNCH HOLES IN PLATE. REMOVE PLATE FROM CABINET BEFORE DRILLING/PUNCHING.

\*\*WEIGHT OF 1 BATTERY STRING(4 BATTERY MODULES) IS 128 kg [282 lbs].

THIS DRAWING AND SPECIFICATIONS HEREIN ARE THE PROPERTY OF SCHNEIDER ELECTRIC AND SHALL NOT BE COPIED, REPRODUCED OR USED IN WHOLE OR IN PART, AS THE BASIS FOR THE MANUFACTURE OR SALE OF ITEMS WITHOUT WRITTEN PERMISSION FROM SCHNEIDER ELECTRIC. THIS DRAWING IS BASED UPON LATEST AVAILABLE INFORMATION AND IS SUBJECT TO CHANGE WITHOUT NOTICE.

Schneider Electric

TITLE: Galaxy VS  
UPS 20-50kW N+1 / 60-100kW  
Input: 380/400/415V, 3PH, 50Hz, SINGLE/DUAL MAINS  
Output: 380/400/415V, 3PH, 50Hz  
GENERAL ARRANGEMENT

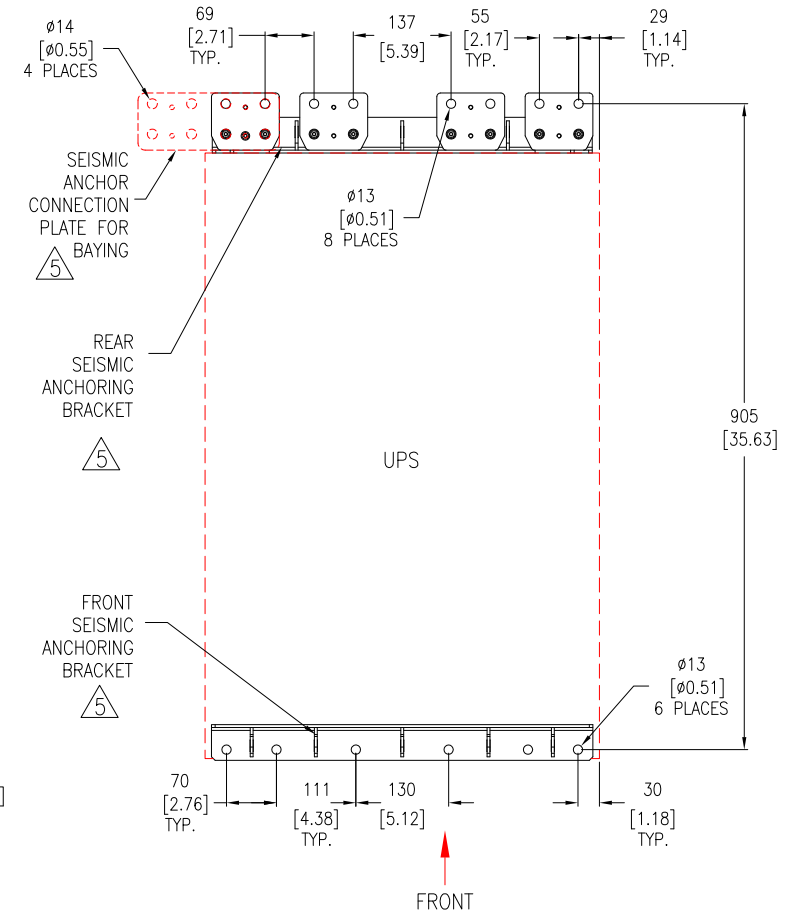
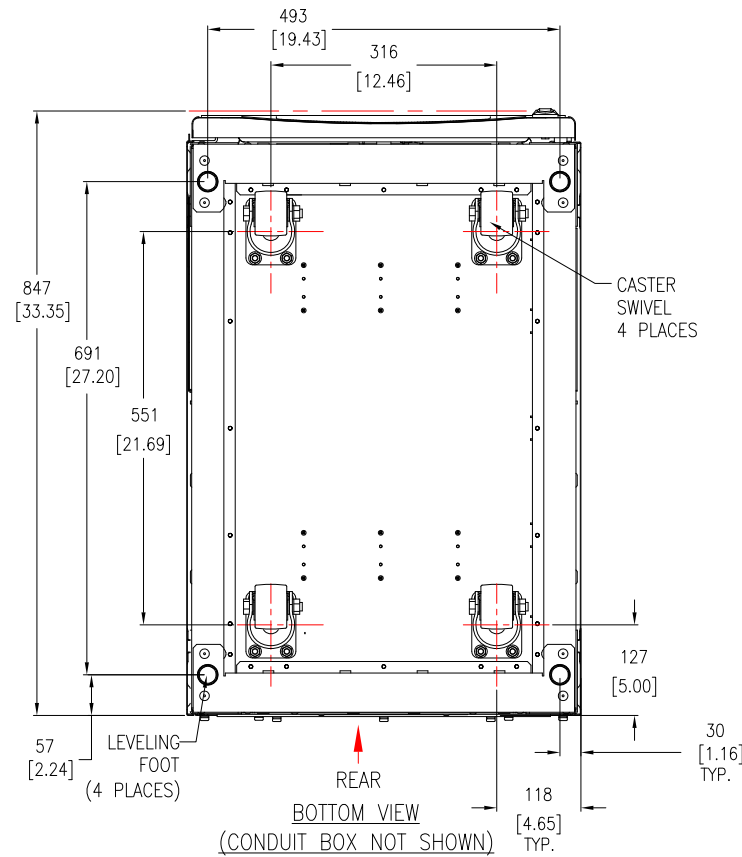
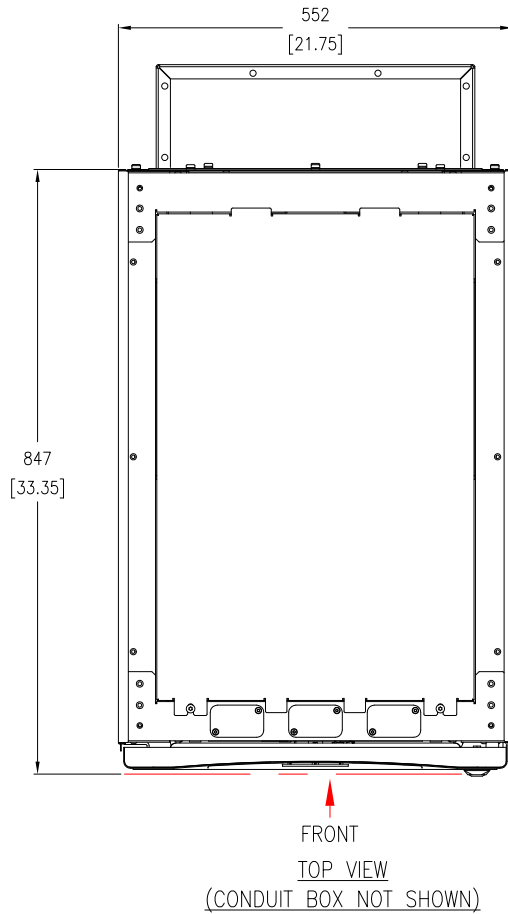
DWG NO: GVS20K100HSTA10

DRAWN: BALA 16-JUL-20  
ENGINEER: N R / C B 16-JUL-20

APPROVED: J L 16-JUL-20

REV. 1  
FIRST ANGLE PROJECTION

PROJECT: SUBMITTAL DRAWINGS SHEET 1 OF 4



#### NOTES:

1. INSTALLATION SHALL COMPLY WITH ALL APPLICABLE NATIONAL, STATE AND LOCAL CODES.
2. REFER TO PRODUCT DOCUMENTATION FOR ADDITIONAL DETAILS PRIOR TO INSTALLATION AND SITE PREPARATION WORK.
3. ALL DIMENSIONS ARE IN MILLIMETERS [INCHES].
- △4. SEISMIC LOCATION : OPTIONAL SEISMIC KIT IS REQUIRED.
- △5. PART OF OPTIONAL SEISMIC KIT (SKU# GVSOPT016).

THIS DRAWING AND SPECIFICATIONS HEREIN ARE THE PROPERTY OF SCHNEIDER ELECTRIC AND SHALL NOT BE COPIED, REPRODUCED OR USED IN WHOLE OR IN PART, AS THE BASIS FOR THE MANUFACTURE OR SALE OF ITEMS WITHOUT WRITTEN PERMISSION FROM SCHNEIDER ELECTRIC. THIS DRAWING IS BASED UPON LATEST AVAILABLE INFORMATION AND IS SUBJECT TO CHANGE WITHOUT NOTICE.

**Schneider Electric**

TITLE: Galaxy VS  
UPS 20-50kW N+1 / 60-100kW  
Input: 380/400/415V, 3PH, 50Hz, SINGLE/DUAL MAINS  
Output: 380/400/415V, 3PH, 50Hz  
TOP VIEW & ANCHORING

DWG NO: GVS20K100HSTAIO

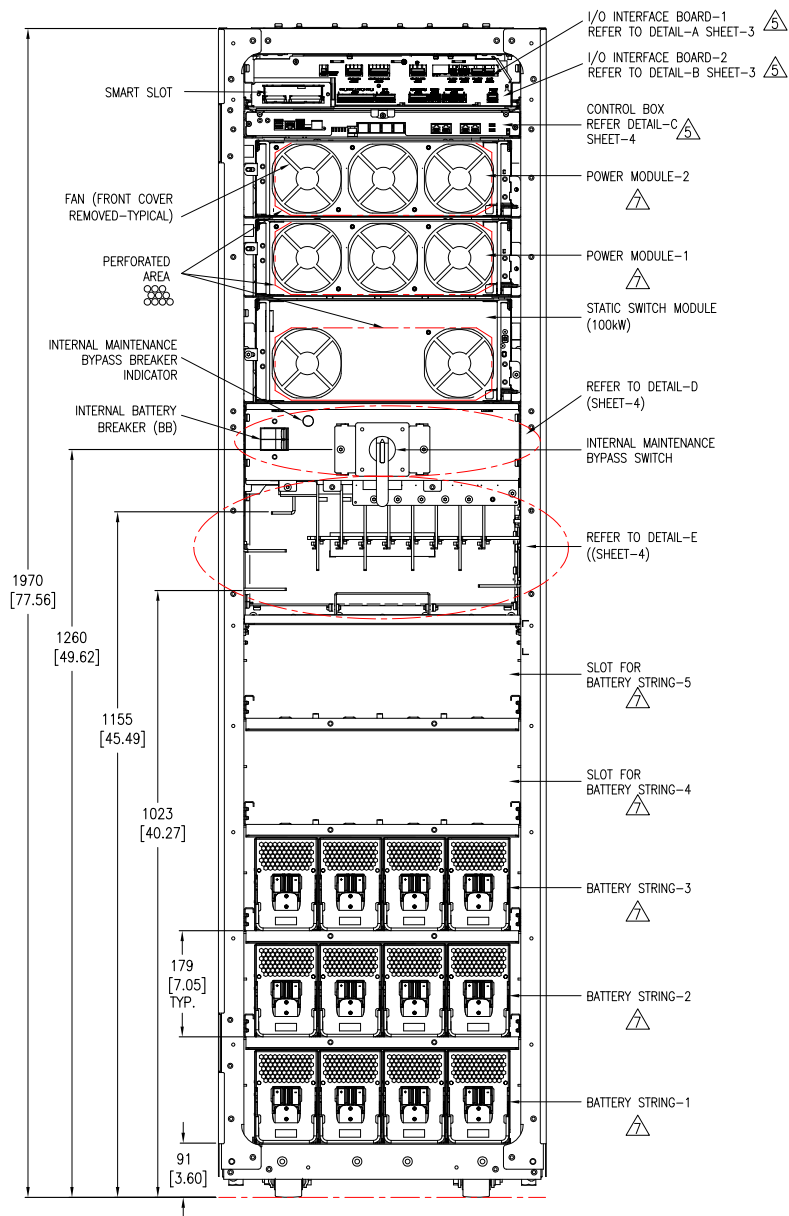
REV. 1

DRAWN: BALA 24-FEB-20  
ENGINEER: N R / C B 24-FEB-20

APPROVED: J L 24-FEB-20



PROJECT: SUBMITTAL DRAWINGS SHEET 2 OF 4

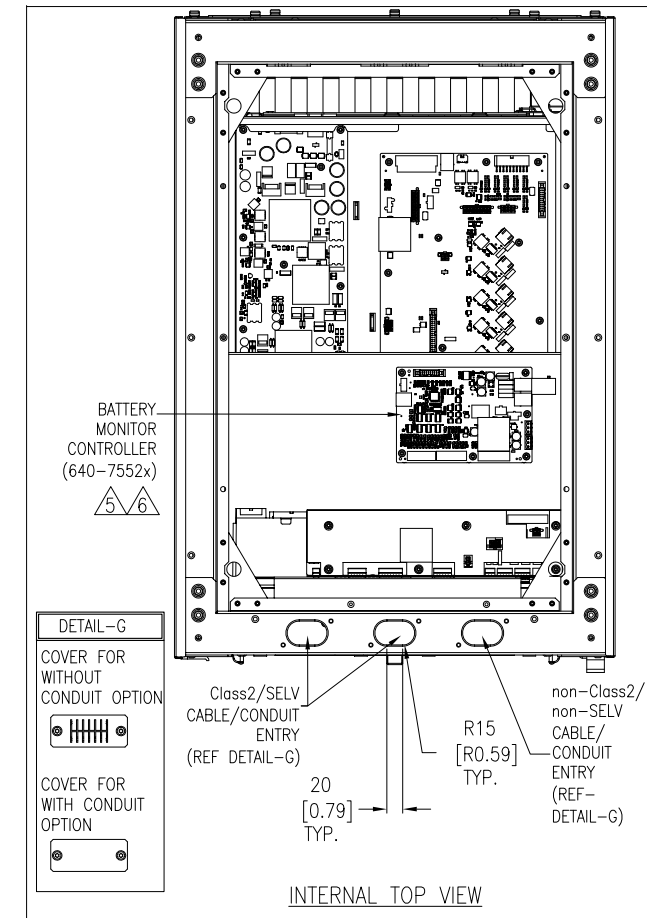
FIRST  
ANGLE  
PROJECTION



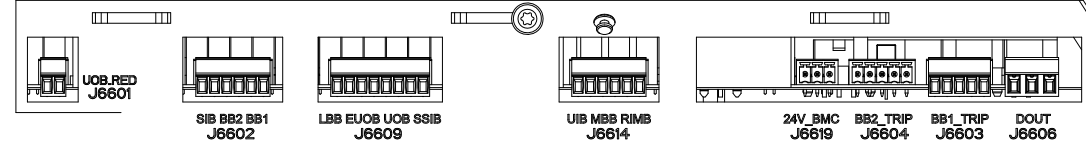
INTERNAL FRONT VIEW  
TYPICAL

- NOTES:
1. INSTALLATION SHALL COMPLY WITH ALL APPLICABLE NATIONAL, STATE AND LOCAL CODES.
  2. REFER TO PRODUCT DOCUMENTATION FOR ADDITIONAL DETAILS PRIOR TO INSTALLATION AND SITE PREPARATION WORK.
  3. ALL DIMENSIONS ARE IN MILLIMETERS [INCHES].
  4. SOME STRUCTURAL DETAILS HAVE BEEN OMITTED FOR THE PURPOSE OF CLARITY.
  5. FOR INTERFACE DETAILS REFER TO SYSTEM WIRING DIAGRAM GVS10K50HSAIO-WD.
  6. FOR LATEST BOARD PART NUMBER CONTACT SCHNEIDER ELECTRIC.
  7. BATTERY MODULES SHOWN ARE TYPICAL , REFER TO THE TABLE FOR DETAILS.
  8. SKUs WITH 0 DEFAULT BATTERY STRINGS PERMIT TO CHOOSE BETWEEN COMMERCIAL (GVSBT4) OR LONG-LIFE BATTERIES (GVSBT4LL). SKUs WITH DEFAULT BATTERIES 1 OR ABOVE INCLUDE STANDARD COMMERCIAL BATTERIES (GVSBT4) 3-5 YEAR LIFE.

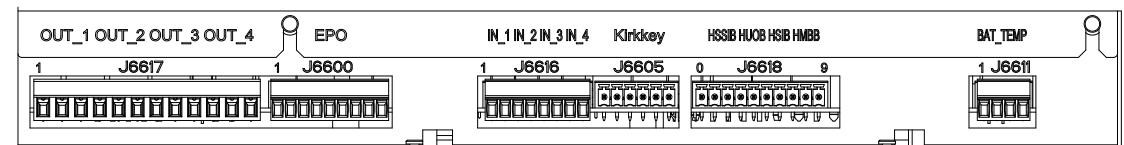
<div>POWER/BATTERY MODULE DETAILS</div>							
SKU NUMBER	RATING (kW)	APPLICABLE POWER MODULE-1		APPLICABLE POWER MODULE-2		DEFAULT BATTERY STRINGS <div></div>	MAXIMUM POSSIBLE BATTERY STRINGS
		RATING (kW)	QTY	RATING (kW)	QTY		
GVSUPS20KR0B5HS	20 N+1	20	1	20	1	0	5
GVSUPS30KR0B5HS	30 N+1	50	1	50	1		
GVSUPS40KR0B5HS	40 N+1		1		1		
GVSUPS50KR0B5HS	50 N+1		1		1		
GVSUPS60KB5HS	60	50	1	20	1	3	
GVSUPS80KB5HS	80	50	1	50	1		
GVSUPS100KB5HS	100		1		1		
GVSUPS60K0B5HS	60	50	1	20	1	0	
GVSUPS80K0B5HS	80	50	1	50	1		
GVSUPS100K0B5HS	100		1		1		



INTERNAL TOP VIEW



DETAIL-A (I/O INTERFACE BOARD-1 ENLARGED VIEW)



DETAIL-B (I/O INTERFACE BOARD-2 ENLARGED VIEW)

THIS DRAWING AND SPECIFICATIONS HEREIN ARE THE PROPERTY OF SCHNEIDER ELECTRIC AND SHALL NOT BE COPIED, REPRODUCED OR USED IN WHOLE OR IN PART, AS THE BASIS FOR THE MANUFACTURE OR SALE OF ITEMS WITHOUT WRITTEN PERMISSION FROM SCHNEIDER ELECTRIC. THIS DRAWING IS BASED UPON LATEST AVAILABLE INFORMATION AND IS SUBJECT TO CHANGE WITHOUT NOTICE.

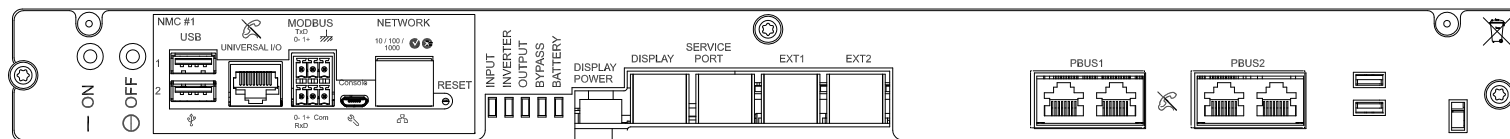
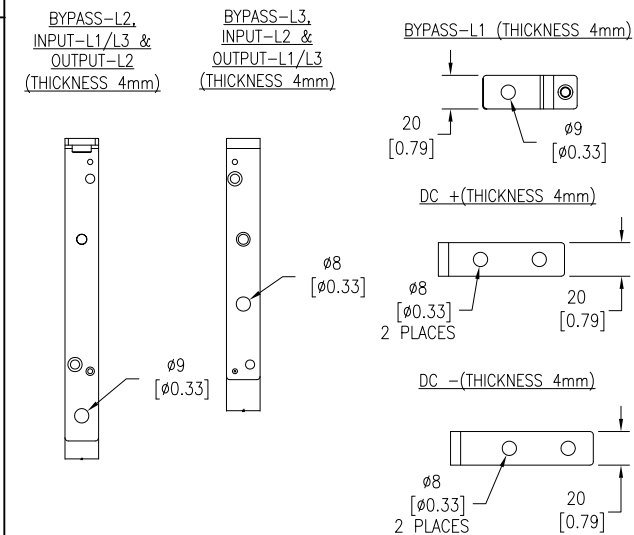
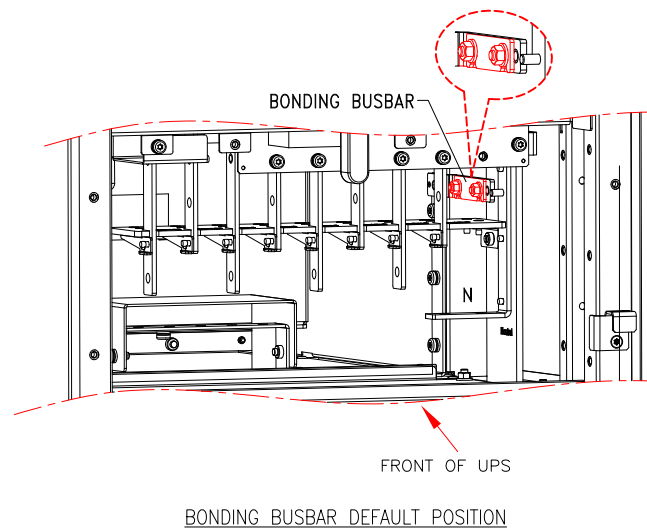
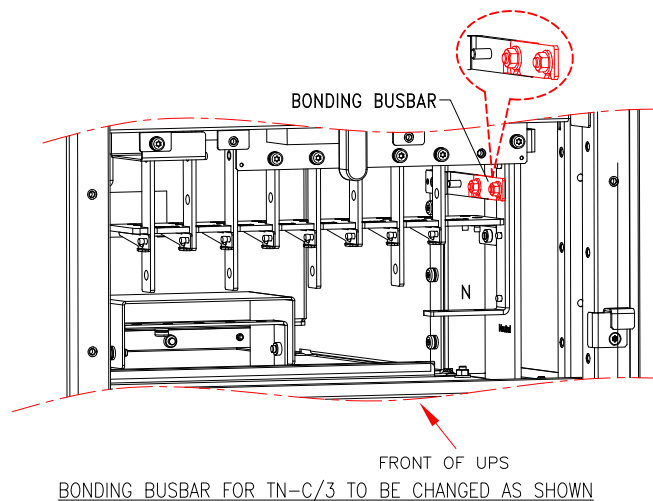
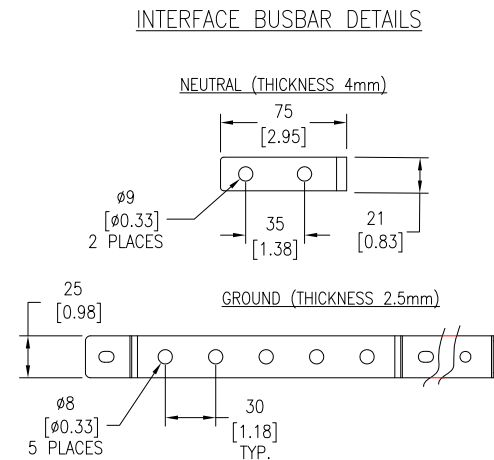
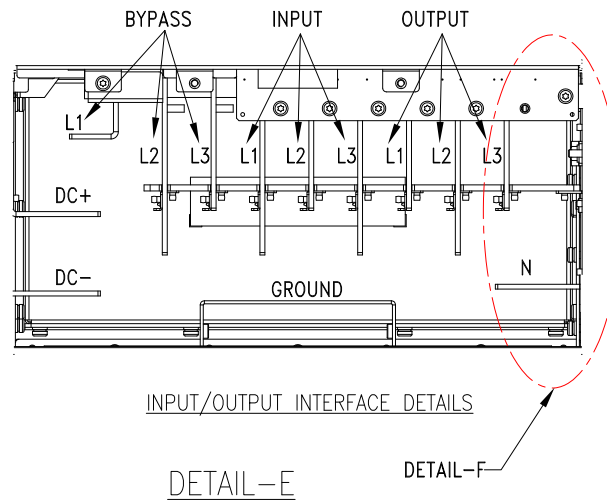
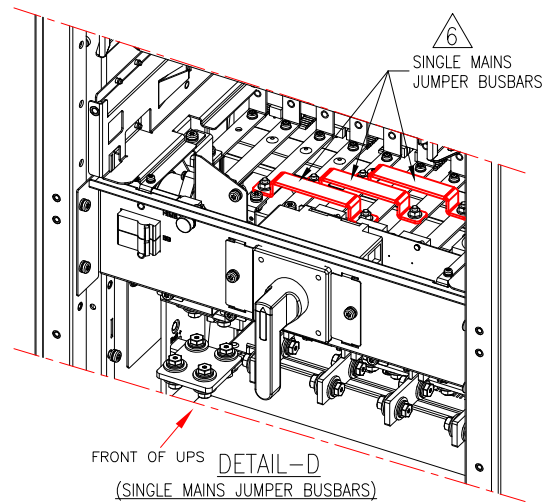
**Schneider Electric**

TITLE: Galaxy VS  
UPS 20-50kW N+1 / 60-100kW  
Input: 380/400/415V, 3PH, 50Hz, SINGLE/DUAL MAINS  
Output: 380/400/415V, 3PH, 50Hz  
INTERNAL AND INTERFACE DETAILS

PROJECT: SUBMITTAL DRAWINGS SHEET 3 OF 4

DWG NO: GVS20K100HSTAIO  
DRAWN: BALA 16-JUL-20  
ENGINEER: N R / C B 16-JUL-20  
APPROVED: J L 16-JUL-20

REV. 1  
FIRST ANGLE  
PROJECTION



△ 4/5 DETAIL-C (SYSTEM LEVEL CONTROL BOX-ENLARGED VIEW)

- NOTES:
1. INSTALLATION SHALL COMPLY WITH ALL APPLICABLE NATIONAL, STATE AND LOCAL CODES.
  2. REFER TO PRODUCT DOCUMENTATION FOR ADDITIONAL DETAILS PRIOR TO INSTALLATION AND SITE PREPARATION WORK.
  3. ALL DIMENSIONS ARE IN MILLIMETERS [INCHES].
  - △ 4. FOR INTERFACE DETAILS REFER TO SYSTEM WIRING DIAGRAM GVS10K50HSAIO-WD.
  - △ 5. FOR LATEST BOARD PART NUMBER CONTACT SCHNEIDER ELECTRIC.
  6. SOME STRUCTURAL DETAILS HAVE BEEN OMITTED FOR THE PURPOSE OF CLARITY.

THIS DRAWING AND SPECIFICATIONS HEREIN ARE THE PROPERTY OF SCHNEIDER ELECTRIC AND SHALL NOT BE COPIED, REPRODUCED OR USED IN WHOLE OR IN PART, AS THE BASIS FOR THE MANUFACTURE OR SALE OF ITEMS WITHOUT WRITTEN PERMISSION FROM SCHNEIDER ELECTRIC. THIS DRAWING IS BASED UPON LATEST AVAILABLE INFORMATION AND IS SUBJECT TO CHANGE WITHOUT NOTICE.

**Schneider Electric**

TITLE: Galaxy VS  
UPS 20-50kW N+1 / 60-100kW  
Input: 380/400/415V, 3PH, 50Hz, SINGLE/DUAL MAINS  
Output: 380/400/415V, 3PH, 50Hz  
INTERNAL AND INTERFACE DETAILS

PROJECT: SUBMITTAL DRAWINGS SHEET 4 OF 4

DWG NO: GVS20K100HSTAIO  
DRAWN: BALA  
ENGINEER: N R / C B  
APPROVED: J L

REV. 0  
10-FEB-20  
18-FEB-20  
18-FEB-20  
FIRST ANGLE PROJECTION