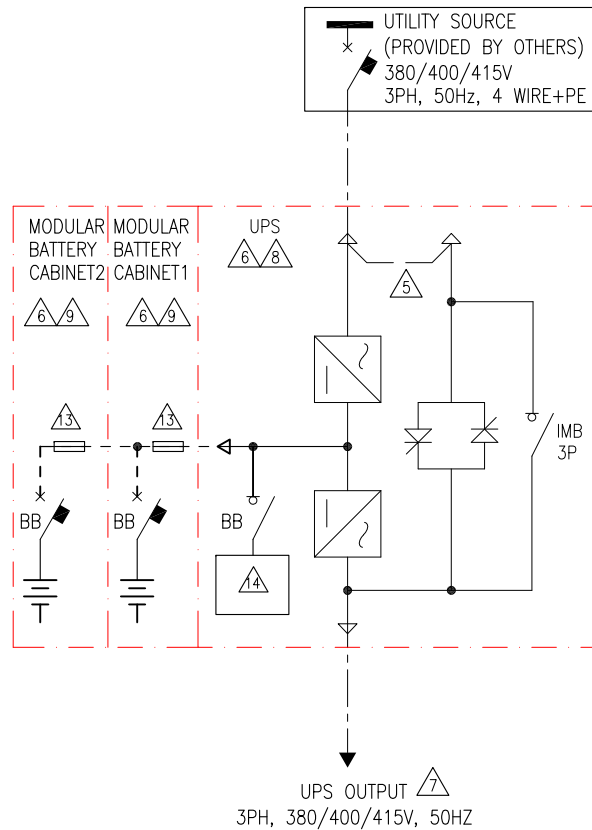
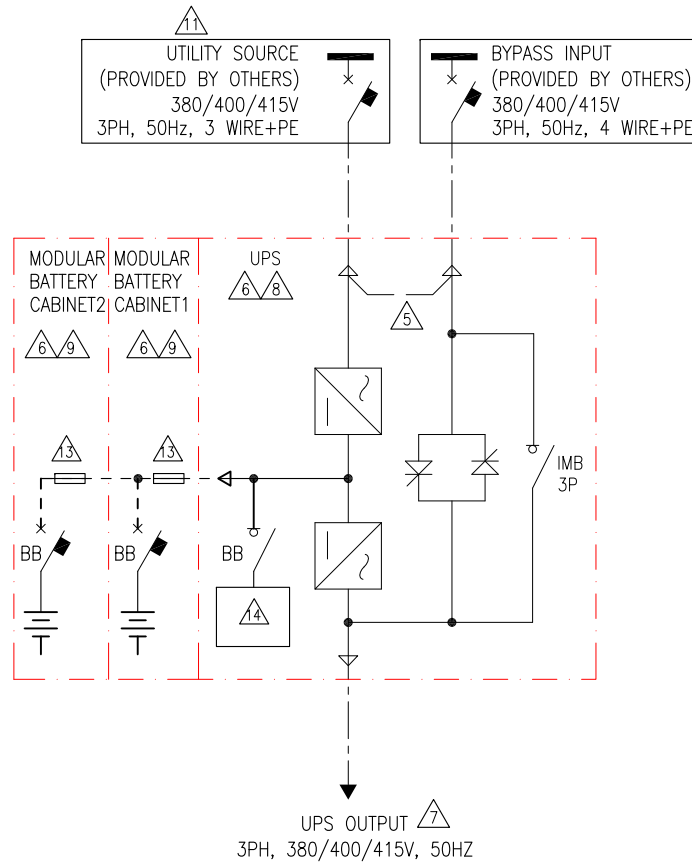


# 1 MOD UPS WITH BATT SOLUTION

## SINGLE MAINS

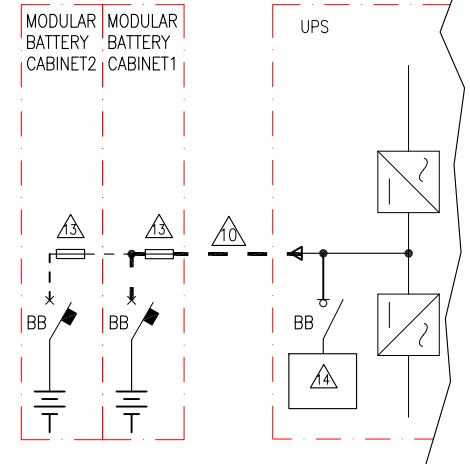


## DUAL MAINS



## REMOTE BATTERY-TYPICAL

(REST OF CONNECTIONS SIMILAR TO ADJACENT BATTERY EXCEPT BELOW)



### NOTES:

1. INSTALLATION SHALL COMPLY WITH ALL APPLICABLE NATIONAL, STATE AND LOCAL CODES.
2. REFER TO PRODUCT INSTALLATION DOCUMENTATION FOR SITE PREPARATIONS.
3. DRAWING DEPICTS POWER SYSTEM CONNECTIONS AND IS NOT REPRESENTATIVE OF PHYSICAL LAYOUT. REFER TO MECHANICAL DRAWINGS FOR EQUIPMENT LAYOUT.
4. FINAL SELECTIONS ARE RESPONSIBILITY OF ENGINEER OF RECORDS BASED ON INSTALLED CONDITIONS AND SCC/SELECTIVE CO-ORDINATION/ARC-FLASH ANALYSIS.
- Δ5. BUS LINK APPLICABLE FOR SINGLE MAINS ONLY, TO BE REMOVED FOR DUAL MAINS INSTALLATION.
- Δ6. FOR TECHNICAL SPECIFICATIONS, RECOMMENDATIONS AND SKU NUMBERS REFER TO SHEET-6.
- Δ7. THE NUMBER OF OUTPUT WIRES MUST MATCH THE NUMBER OF INPUT WIRES IN SINGLE MAINS OR BYPASS WIRES FOR DUAL MAINS.
- Δ8. MAXIMUM INPUT SHORT-CIRCUIT WITHSTAND:  $I_{cw}=65kA$  RMS SYMMETRICAL.
- Δ9. APPLICABLE FOR ALL UPSs EXCEPT GVSUPS10KB2HS & GVSUPS20KB2HS. TWO CABINETS SHOWN. MAXIMUM OF FOUR BATTERY CABINETS CAN BE BAYED WITH THE UPS. FOR RUNTIME DETAILS REFER TO BATTERY CABINET INSTALLATION MANUALS OR CONTACT SCHNEIDER ELECTRIC.
- Δ10. FOR OPTIONAL POWER AND SIGNAL INTERFACE CABLE DETAILS CONTACT SCHNEIDER ELECTRIC.
- Δ11. TN AND TT POWER DISTRIBUTION SYSTEMS ARE SUPPORTED. CORNER (LINE) GROUNDING IS NOT SUPPORTED. ONLY FOR DUAL MAINS SYSTEM WITH UPSTREAM 4 POLE BREAKERS: INSTALL AN N CONNECTION WITH THE INPUT CABLES.
12. CABLE LUGS ARE PROVIDED BY OTHERS EXCEPT FOR ADJACENT BATTERY CABINET INSTALLATION.
- Δ13. REFER TO GVSMODBC6 DRAWING FOR ADDITIONAL DETAILS.
- Δ14. NO INTERNAL BATTERIES ARE PROVIDED WITH THE UPS. SLOTS AVAILABLE FOR A MAX. OF 4 BATTERY STRINGS (GVSBT4) OR (GVSBT4LL).

THIS DRAWING AND SPECIFICATIONS HEREIN ARE THE PROPERTY OF SCHNEIDER ELECTRIC AND SHALL NOT BE COPIED, REPRODUCED OR USED IN WHOLE OR IN PART, AS THE BASIS FOR THE MANUFACTURE OR SALE OF ITEMS WITHOUT WRITTEN PERMISSION FROM SCHNEIDER ELECTRIC. THIS DRAWING IS BASED UPON LATEST AVAILABLE INFORMATION AND IS SUBJECT TO CHANGE WITHOUT NOTICE.

**Schneider Electric**

TITLE: GALAXY VS  
Input: 380/400/415V AC, 3PH, 50Hz SINGLE/DUAL FEED  
Output: 380/400/415V AC, 3PH, 50Hz 20-50kW  
1 MOD UPS w/ INT BATT w EXT BATT SOLUTION  
SYSTEM ONE LINE DIAGRAM

PROJECT: DRAWINGS SHEET 1 OF 6

DWG NO: GVS20K0B50HSAIO-SD  
DRAWN BY: BALA 28-OCT-19  
ENGINEER: S A 28-OCT-19

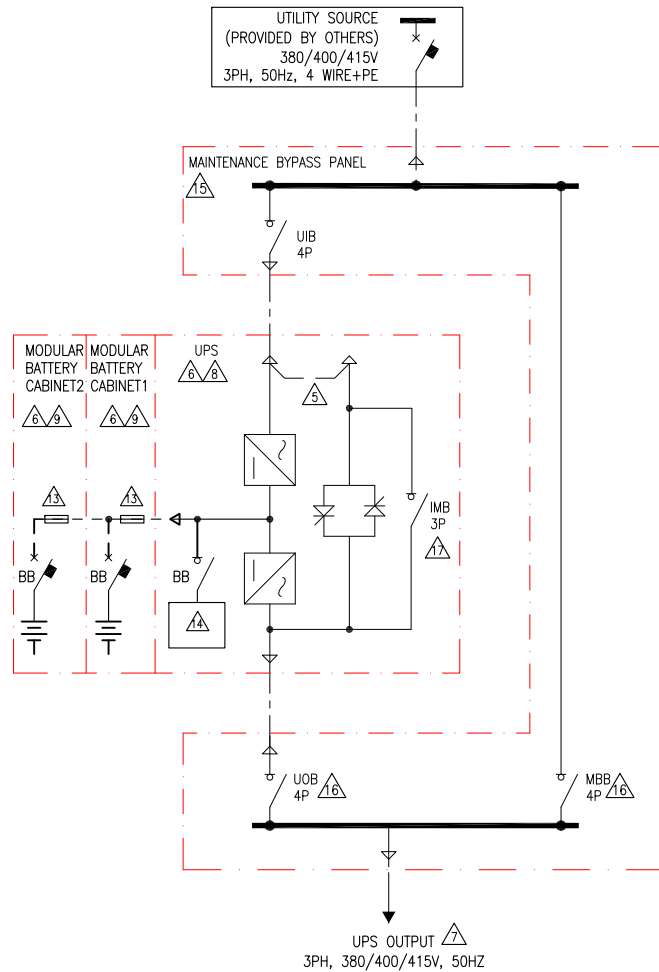
APPROVED BY: C B 28-OCT-19

REV. 0  
ANGLE  
PROJECTION  
N.A.

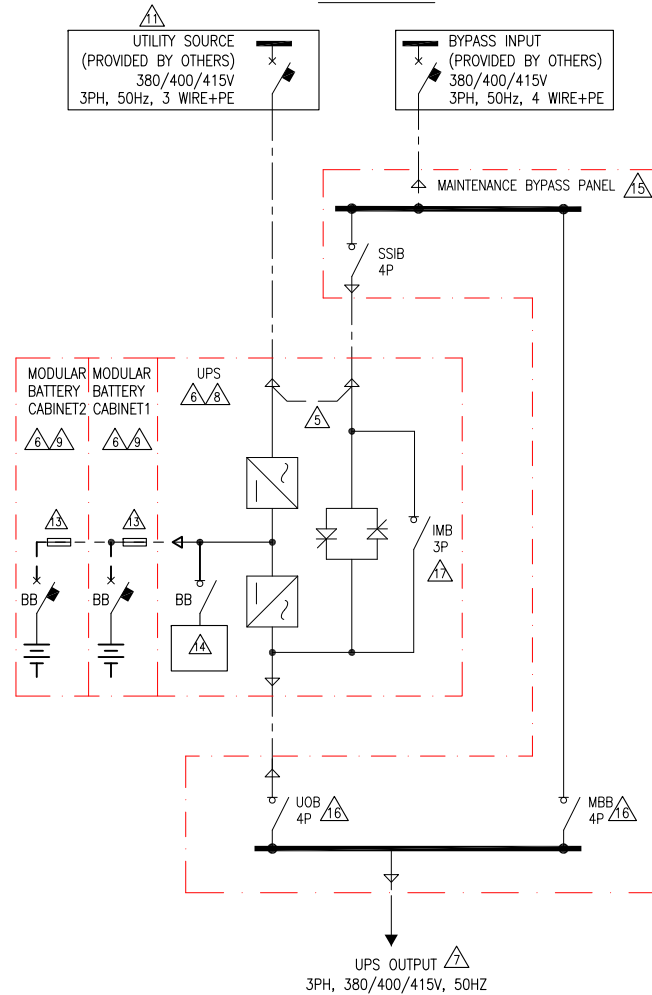
LEGEND:	
---	AC CABLE (PROVIDED BY OTHERS)
----	600V DC CABLE (PART OF MODULAR BATTERY CABINET)
----	600V DC CABLE (PROVIDED BY OTHERS)

# 1 MOD UPS WITH MAINTENANCE BYPASS PANEL AND BATT SOLUTION

## SINGLE MAINS

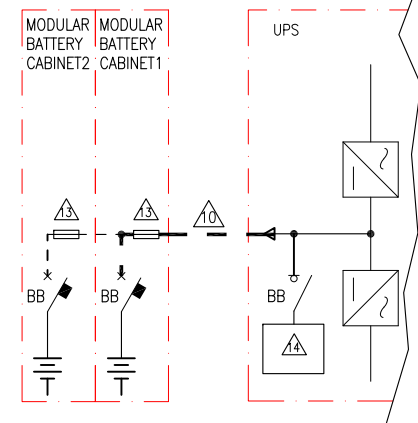


## DUAL MAINS



## REMOTE BATTERY-TYPICAL

(REST OF CONNECTIONS SIMILAR TO ADJACENT BATTERY EXCEPT BELOW)



### NOTES:

1. INSTALLATION SHALL COMPLY WITH ALL APPLICABLE NATIONAL, STATE AND LOCAL CODES.
2. REFER TO PRODUCT INSTALLATION DOCUMENTATION FOR SITE PREPARATIONS.
3. DRAWING DEPICTS POWER SYSTEM CONNECTIONS AND IS NOT REPRESENTATIVE OF PHYSICAL LAYOUT. REFER TO MECHANICAL DRAWINGS FOR EQUIPMENT LAYOUT.
4. FINAL SELECTIONS ARE RESPONSIBILITY OF ENGINEER OF RECORDS BASED ON INSTALLED CONDITIONS AND SCC/SELECTIVE CO-ORDINATION/ARC-FLASH ANALYSIS.
- △5. BUS LINK APPLICABLE FOR SINGLE MAINS ONLY, TO BE REMOVED FOR DUAL MAINS INSTALLATION.
- △6. FOR TECHNICAL SPECIFICATIONS, RECOMMENDATIONS AND SKU NUMBERS REFER TO SHEET-6.
- △7. THE NUMBER OF OUTPUT WIRES MUST MATCH THE NUMBER OF INPUT WIRES IN SINGLE MAINS OR BYPASS WIRES FOR DUAL MAINS.
- △8. MAXIMUM INPUT SHORT-CIRCUIT WITHSTAND:  $I_{cw}=65\text{kA}$  RMS SYMMETRICAL.
- △9. APPLICABLE FOR ALL UPSs EXCEPT GVSUPS10KB2HS & GVSUPS20KB2HS. TWO CABINETS SHOWN. MAXIMUM OF FOUR BATTERY CABINETS CAN BE BAYED WITH THE UPS. FOR RUNTIME DETAILS REFER TO BATTERY CABINET INSTALLATION MANUALS OR CONTACT SCHNEIDER ELECTRIC.
- △10. FOR OPTIONAL POWER AND SIGNAL INTERFACE CABLE DETAILS CONTACT SCHNEIDER ELECTRIC.
- △11. TN AND TT POWER DISTRIBUTION SYSTEMS ARE SUPPORTED. CORNER (LINE) GROUNDING IS NOT SUPPORTED. ONLY FOR DUAL MAINS SYSTEM WITH UPSTREAM 4 POLE BREAKERS: INSTALL AN N CONNECTION WITH THE INPUT CABLES.
12. CABLE LUGS ARE PROVIDED BY OTHERS EXCEPT FOR ADJACENT BATTERY CABINET INSTALLATION.
- △13. REFER TO GVSMDDB6 DRAWING FOR ADDITIONAL DETAILS.
- △14. NO INTERNAL BATTERIES ARE PROVIDED WITH THE UPS. SLOTS AVAILABLE FOR A MAX. OF 4 BATTERY STRINGS (GVSBT4) OR (GVSBT4LL).
- △15. MAXIMUM INPUT SHORT-CIRCUIT WITHSTAND:  $I_{cw}=10\text{kA}$  RMS SYMMETRICAL.
- △16. BOTH MBB AND UOB NEUTRAL ARE CONNECTED WITH PRE-INSTALLED JUMPERS.
- △17. THE INTERNAL MAINTENANCE BREAKER (IMB) MUST BE PADLOCKED IN OPEN POSITION.

THIS DRAWING AND SPECIFICATIONS HEREIN ARE THE PROPERTY OF SCHNEIDER ELECTRIC AND SHALL NOT BE COPIED, REPRODUCED OR USED IN WHOLE OR IN PART, AS THE BASIS FOR THE MANUFACTURE OR SALE OF ITEMS WITHOUT WRITTEN PERMISSION FROM SCHNEIDER ELECTRIC. THIS DRAWING IS BASED UPON LATEST AVAILABLE INFORMATION AND IS SUBJECT TO CHANGE WITHOUT NOTICE.

**Schneider Electric**

TITLE: GALAXY VS  
Input: 380/400/415V AC, 3PH, 50Hz SINGLE/DUAL FEED  
Output: 380/400/415V AC, 3PH, 50Hz 20-50kW  
1 MOD UPS w/ INT BATT w EXT BATT+ SINGLE UNIT MBP  
SYSTEM ONE LINE DIAGRAM

PROJECT: DRAWINGS SHEET 2 OF 6

DWG NO: GVS20K0B50HSAIO-SD

DRAWN BY: BALA 28-OCT-19

ENGINEER: S A 28-OCT-19

APPROVED BY: C B 28-OCT-19

REV. 0

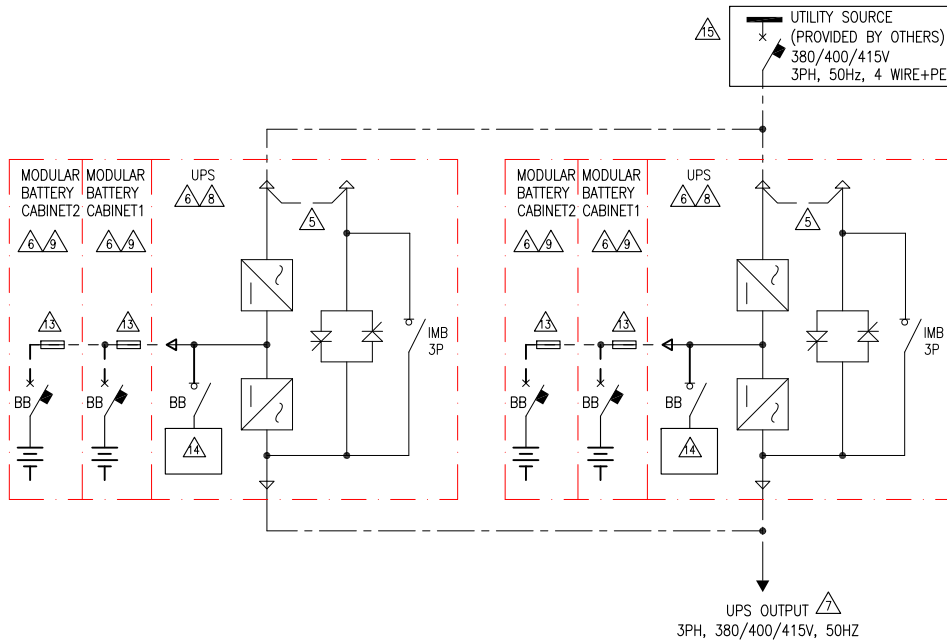
ANGLE

PROJECTION

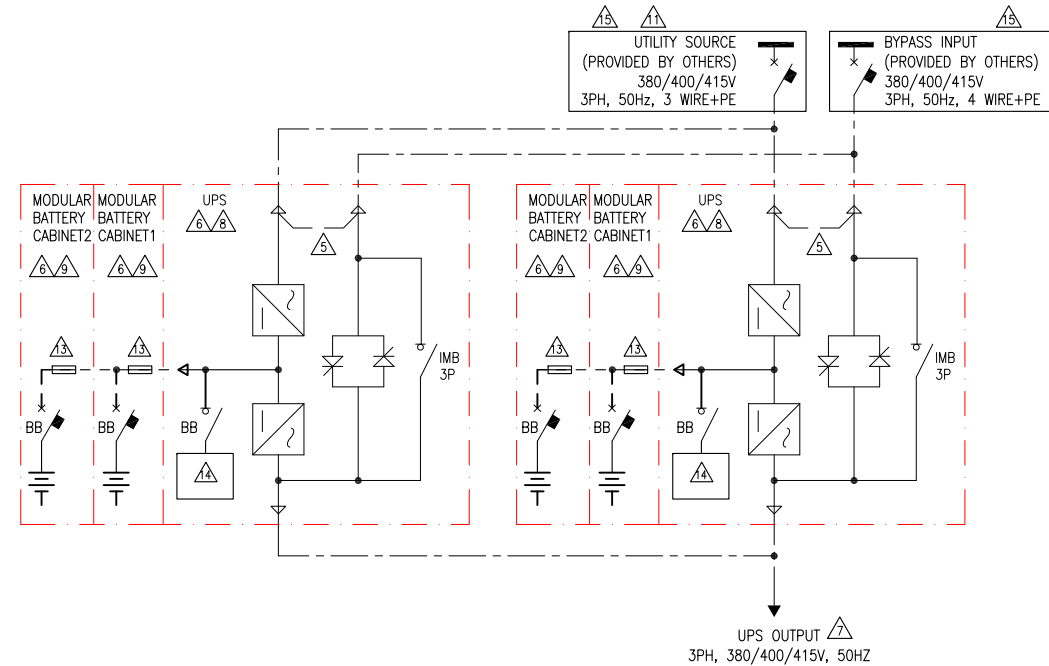
N.A

# SIMPLIFIED 1+1 PARALLEL SYSTEM WITHOUT MAINTENANCE BYPASS PANEL

## SINGLE MAINS

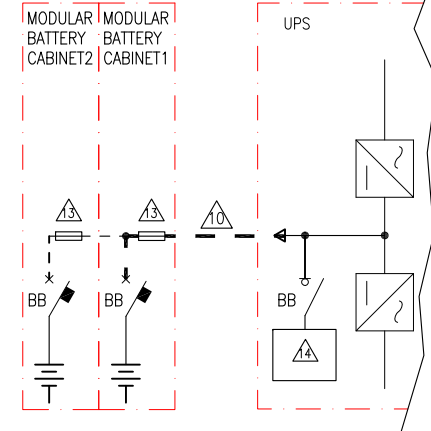


## DUAL MAINS



## REMOTE BATTERY-TYPICAL

(REST OF CONNECTIONS SIMILAR TO ADJACENT BATTERY EXCEPT BELOW)



THIS DRAWING AND SPECIFICATIONS HEREIN ARE THE PROPERTY OF SCHNEIDER ELECTRIC AND SHALL NOT BE COPIED, REPRODUCED OR USED IN WHOLE OR IN PART, AS THE BASIS FOR THE MANUFACTURE OR SALE OF ITEMS WITHOUT WRITTEN PERMISSION FROM SCHNEIDER ELECTRIC. THIS DRAWING IS BASED UPON LATEST AVAILABLE INFORMATION AND IS SUBJECT TO CHANGE WITHOUT NOTICE.

**Schneider Electric**

**TITLE:** GALAXY VS  
Input: 380/400/415V AC, 3PH, 50Hz SINGLE/DUAL FEED  
Output: 380/400/415V AC, 3PH, 50Hz 20-50kW  
1+1 SIMPLIFIED PARALLEL UPS w/ INT BATT w EXT BATT  
SYSTEM ONE LINE DIAGRAM

**PROJECT:** DRAWINGS **SHEET** 3 OF 6

**DWG NO:** GVS20K0B50HSAIO-SD

**DRAWN BY:** BALA 01-SEP-21

**ENGINEER:** S A / C A 02-SEP-21

**APPROVED BY:** C B / C A 02-SEP-21

**REV.** 1

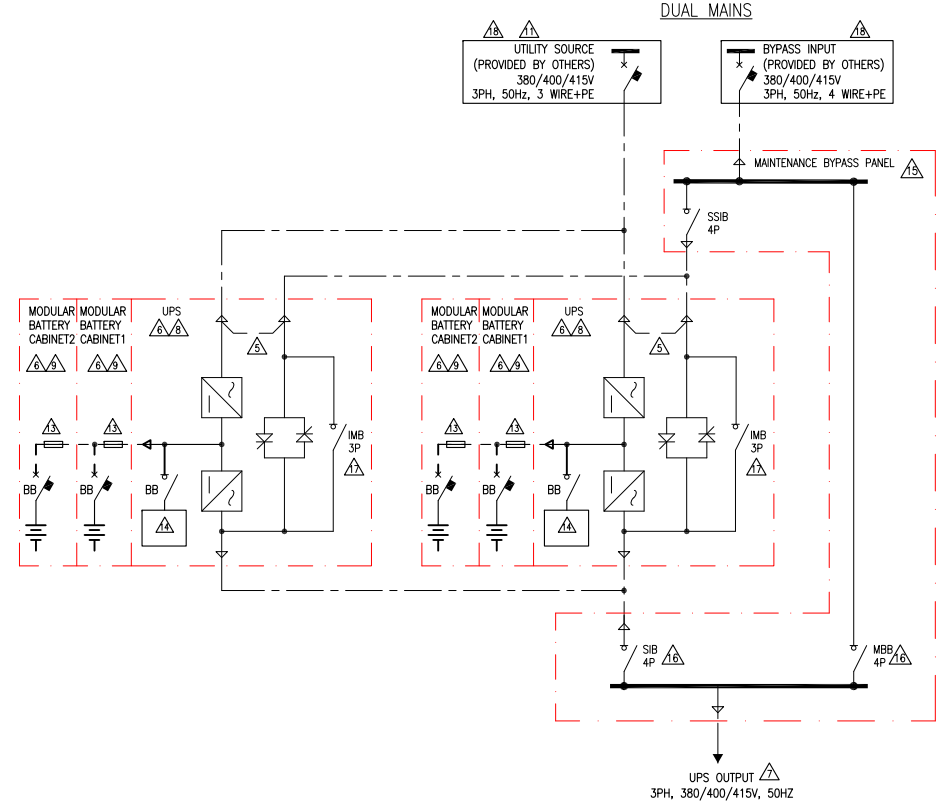
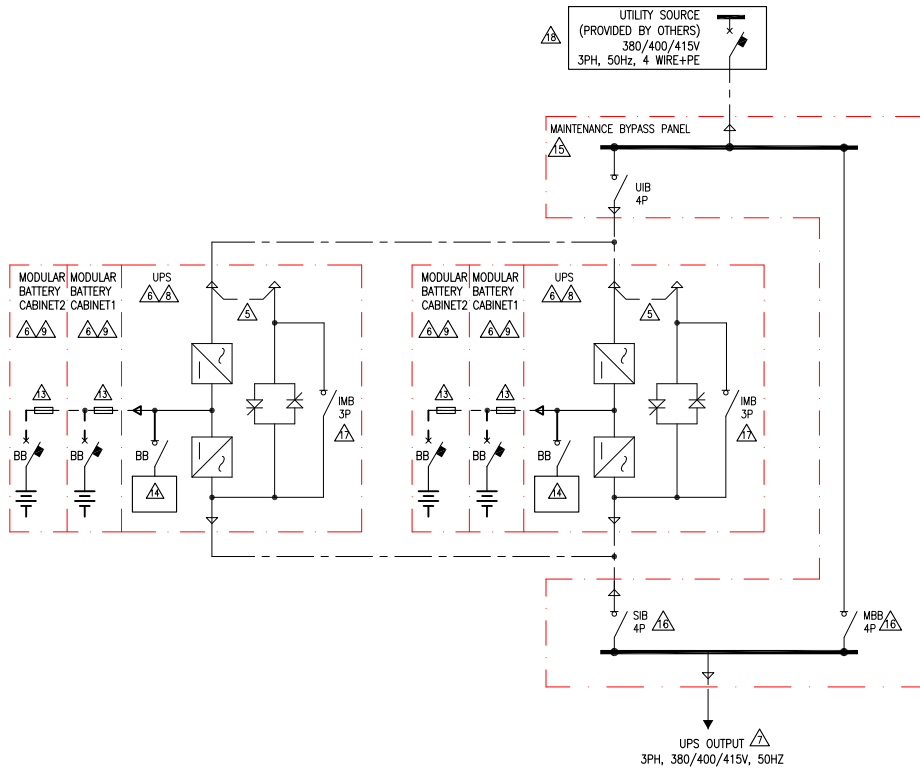
**ANGLE**

**PROJECTION**

**N. A.**

# SIMPLIFIED 1+1 PARALLEL SYSTEM WITH MAINTENANCE BYPASS PANEL

## SINGLE MAINS



### LEGEND:

- — — — — AC CABLE (PROVIDED BY OTHERS)
- - - - - 600V DC CABLE (PART OF MODULAR BATTERY CABINET)
- — — — — 600V DC CABLE (PROVIDED BY OTHERS)

### NOTES:

1. INSTALLATION SHALL COMPLY WITH ALL APPLICABLE NATIONAL, STATE AND LOCAL CODES.
2. REFER TO PRODUCT INSTALLATION DOCUMENTATION FOR SITE PREPARATIONS.
3. DRAWING DEPICTS POWER SYSTEM CONNECTIONS AND IS NOT REPRESENTATIVE OF PHYSICAL LAYOUT. REFER TO MECHANICAL DRAWINGS FOR EQUIPMENT LAYOUT.
4. FINAL SELECTIONS ARE RESPONSIBILITY OF ENGINEER OF RECORDS BASED ON INSTALLED CONDITIONS AND SCC/SELECTIVE CO-ORDINATION/ARC-FLASH ANALYSIS.
- △5. BUS LINK APPLICABLE FOR SINGLE MAINS ONLY, TO BE REMOVED FOR DUAL MAINS INSTALLATION.
- △6. FOR TECHNICAL SPECIFICATIONS, RECOMMENDATIONS AND SKU NUMBERS REFER TO SHEET-6.
- △7. THE NUMBER OF OUTPUT WIRES MUST MATCH THE NUMBER OF INPUT WIRES IN SINGLE MAINS OR BYPASS WIRES FOR DUAL MAINS.
- △8. MAXIMUM INPUT SHORT-CIRCUIT WITHSTAND:  $I_{cw}=65\text{ka}$  RMS SYMMETRICAL.
- △9. APPLICABLE FOR ALL UPSs EXCEPT GVSUPS10KB2HS & GVSUPS20KB2HS. TWO CABINETS SHOWN. MAXIMUM OF FOUR BATTERY CABINETS CAN BE BAYED WITH THE UPS.  
FOR RUNTIME DETAILS REFER TO BATTERY CABINET INSTALLATION MANUALS OR CONTACT SCHNEIDER ELECTRIC.
- △10. FOR OPTIONAL POWER AND SIGNAL INTERFACE CABLE DETAILS CONTACT SCHNEIDER ELECTRIC.
- △11. TN AND TT POWER DISTRIBUTION SYSTEMS ARE SUPPORTED. CORNER (LINE) GROUNDING IS NOT SUPPORTED.  
ONLY FOR DUAL MAINS SYSTEM WITH UPSTREAM 4 POLE BREAKERS: INSTALL AN N CONNECTION WITH THE INPUT CABLES.
12. CABLE LUGS ARE PROVIDED BY OTHERS EXCEPT FOR ADJACENT BATTERY CABINET INSTALLATION.
- △13. REFER TO GVSMODBC6 DRAWING FOR ADDITIONAL DETAILS.
- △14. NO INTERNAL BATTERIES ARE PROVIDED WITH THE UPS. SLOTS AVAILABLE FOR A MAX. OF 4 BATTERY STRINGS (GVSBT4) OR (GVSBT4LL).
- △15. MAXIMUM INPUT SHORT-CIRCUIT WITHSTAND:  $I_{cw}=10\text{ka}$  RMS SYMMETRICAL.
- △16. BOTH MBB AND UOB NEUTRAL ARE CONNECTED WITH PRE-INSTALLED JUMPERS.
- △17. THE INTERNAL MAINTENANCE BREAKER (IMB) MUST BE PADLOCKED IN OPEN POSITION.
- △18. FOR PARALLEL SYSTEMS, UPSTREAM CIRCUIT BREAKER INSTANTANEOUS OVERRIDE (I) VALUES MUST NOT BE SET HIGHER THAN 1250 A.

THIS DRAWING AND SPECIFICATIONS HEREIN ARE THE PROPERTY OF SCHNEIDER ELECTRIC AND SHALL NOT BE COPIED, REPRODUCED OR USED IN WHOLE OR IN PART, AS THE BASIS FOR THE MANUFACTURE OR SALE OF ITEMS WITHOUT WRITTEN PERMISSION FROM SCHNEIDER ELECTRIC. THIS DRAWING IS BASED UPON LATEST AVAILABLE INFORMATION AND IS SUBJECT TO CHANGE WITHOUT NOTICE.

**Schneider Electric**

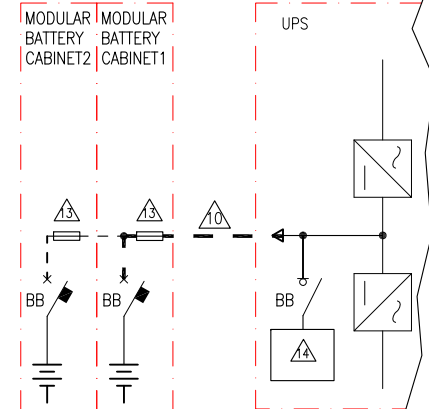
**TITLE:** GALAXY VS  
Input: 380/400/415V AC, 3PH, 50Hz SINGLE/DUAL FEED  
Output: 380/400/415V AC, 3PH, 50Hz 20-50kW  
1+1 SIMPLIFIED PARALLEL UPS w/ INT BATT w EXT BATT+MBP  
SYSTEM ONE LINE DIAGRAM  
**PROJECT:** DRAWINGS **SHEET** 4 OF 6

**DWG NO:** GVS20K0B50HSAIO-SD  
**DRAWN BY:** BALA 01-SEP-21  
**ENGINEER:** S A / C A 02-SEP-21  
**APPROVED BY:** C B / C A 02-SEP-21

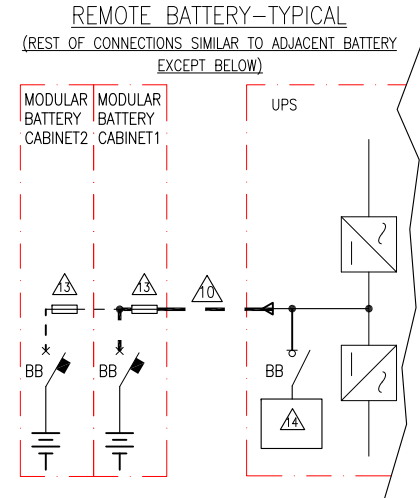
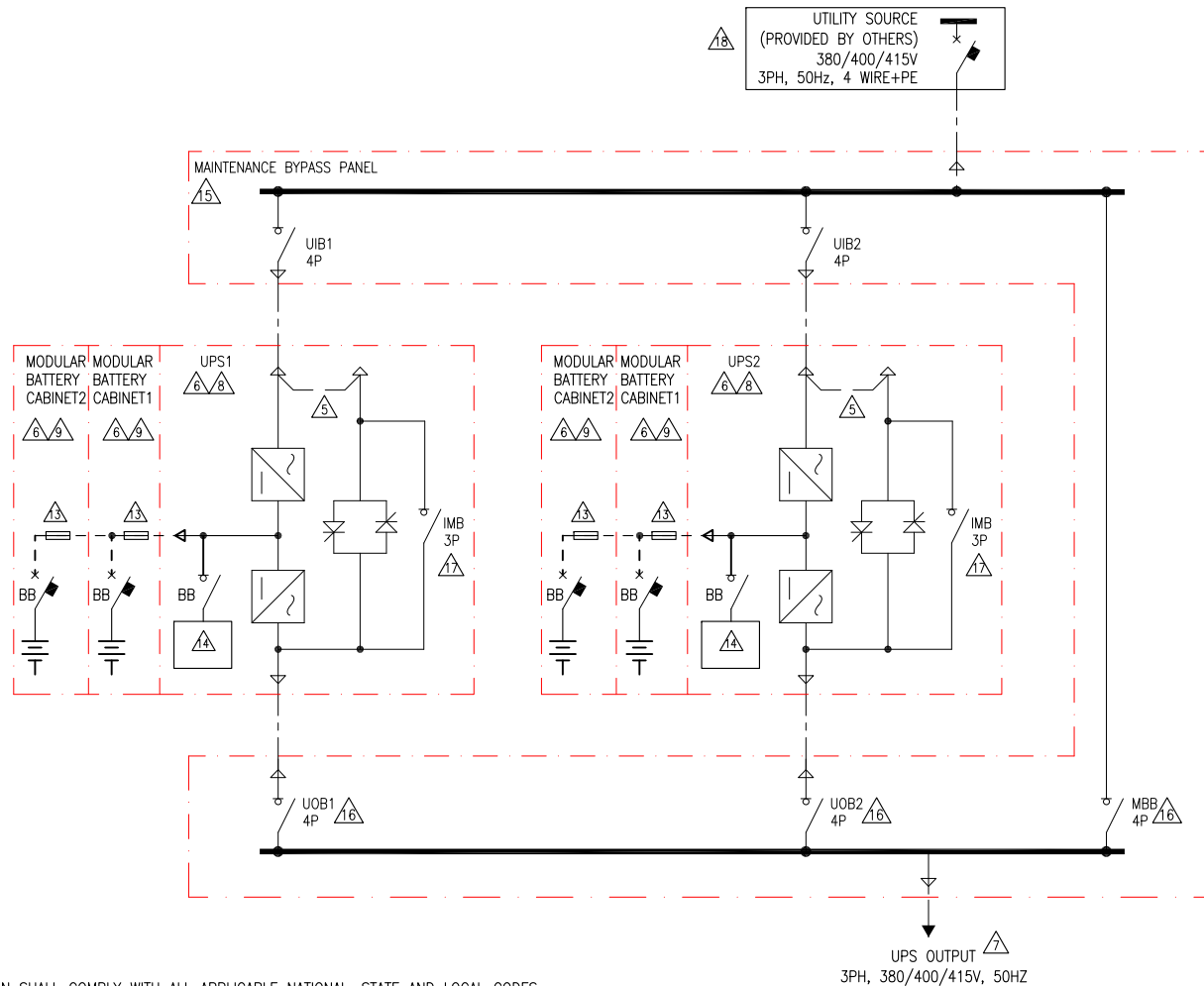
**REV.** 1  
**ANGLE**  
**PROJECTION**  
**N. A**

## REMOTE BATTERY-TYPICAL

(REST OF CONNECTIONS SIMILAR TO ADJACENT BATTERY EXCEPT BELOW)



## 2 MOD (N+1)/ CAPACITY UPS WITH MAINTENANCE BYPASS PANEL AND BATT SOLUTION



### NOTES:

1. INSTALLATION SHALL COMPLY WITH ALL APPLICABLE NATIONAL, STATE AND LOCAL CODES.
2. REFER TO PRODUCT INSTALLATION DOCUMENTATION FOR SITE PREPARATIONS.
3. DRAWING DEPICTS POWER SYSTEM CONNECTIONS AND IS NOT REPRESENTATIVE OF PHYSICAL LAYOUT. REFER TO MECHANICAL DRAWINGS FOR EQUIPMENT LAYOUT.
4. FINAL SELECTIONS ARE RESPONSIBILITY OF ENGINEER OF RECORDS BASED ON INSTALLED CONDITIONS AND SCC/SELECTIVE CO-ORDINATION/ARC-FLASH ANALYSIS.
5. BUS LINK APPLICABLE FOR SINGLE MAINS ONLY, TO BE REMOVED FOR DUAL MAINS INSTALLATION.
6. FOR TECHNICAL SPECIFICATIONS, RECOMMENDATIONS AND SKU NUMBERS REFER TO SHEET-6.
7. THE NUMBER OF OUTPUT WIRES MUST MATCH THE NUMBER OF INPUT WIRES IN SINGLE MAINS OR BYPASS WIRES FOR DUAL MAINS.
8. MAXIMUM INPUT SHORT-CIRCUIT WITHSTAND:  $I_{cw}=65\text{ka}$  RMS SYMMETRICAL.
9. APPLICABLE FOR ALL UPSs EXCEPT GVSUPS10KB2HS & GVSUPS20KB2HS. TWO CABINETS SHOWN. MAXIMUM OF FOUR BATTERY CABINETS CAN BE BAYED WITH THE UPS.
10. FOR RUNTIME DETAILS REFER TO BATTERY CABINET INSTALLATION MANUALS OR CONTACT SCHNEIDER ELECTRIC.
11. FOR OPTIONAL POWER AND SIGNAL INTERFACE CABLE DETAILS CONTACT SCHNEIDER ELECTRIC.
12. TN AND TT POWER DISTRIBUTION SYSTEMS ARE SUPPORTED. CORNER (LINE) GROUNDING IS NOT SUPPORTED.
13. ONLY FOR DUAL MAINS SYSTEM WITH UPSTREAM 4 POLE BREAKERS: INSTALL AN N CONNECTION WITH THE INPUT CABLES.
14. CABLE LUGS ARE PROVIDED BY OTHERS EXCEPT FOR ADJACENT BATTERY CABINET INSTALLATION.
15. REFER TO GVSMODBC6 DRAWING FOR ADDITIONAL DETAILS.
16. NO INTERNAL BATTERIES ARE PROVIDED WITH THE UPS. SLOTS AVAILABLE FOR A MAX. OF 4 BATTERY STRINGS (GVSBT4) OR (GVSBT4LL).
17. MAXIMUM INPUT SHORT-CIRCUIT WITHSTAND:  $I_{cw}=10\text{ka}$  RMS SYMMETRICAL.
18. BOTH MBB AND UOB NEUTRAL ARE CONNECTED WITH PRE-INSTALLED JUMPERS.
19. THE INTERNAL MAINTENANCE BREAKER (IMB) MUST BE PADLOCKED IN OPEN POSITION.
20. FOR PARALLEL SYSTEMS, UPSTREAM CIRCUIT BREAKER INSTANTANEOUS OVERRIDE (II) VALUES MUST NOT BE SET HIGHER THAN 1250 A.

THIS DRAWING AND SPECIFICATIONS HEREIN ARE THE PROPERTY OF SCHNEIDER ELECTRIC AND SHALL NOT BE COPIED, REPRODUCED OR USED IN WHOLE OR IN PART, AS THE BASIS FOR THE MANUFACTURE OR SALE OF ITEMS WITHOUT WRITTEN PERMISSION FROM SCHNEIDER ELECTRIC. THIS DRAWING IS BASED UPON LATEST AVAILABLE INFORMATION AND IS SUBJECT TO CHANGE WITHOUT NOTICE.

**Schneider Electric**

**TITLE:** GALAXY VS  
Input: 380/400/415V AC, 3PH, 50Hz SINGLE FEED  
Output: 380/400/415V AC, 3PH, 50Hz 20-50kW  
2 MOD N+1/N UPS w/ INT BATT w EXT BATT+ PARALLEL MBP  
SYSTEM ONE LINE DIAGRAM

**PROJECT:** DRAWINGS **SHEET** 5 OF 6

**DWG NO:** GVS20K0B50HSAIO-SD

**DRAWN BY:** BALA 01-SEP-21

**ENGINEER:** S A / C A 02-SEP-21

**APPROVED BY:** C B / C A 02-SEP-21

**REV.** 1

**ANGLE**

**PROJECTION**

**N. A.**

GALAXY VS 10–50KW 1 MODULE/ 1+1 MODULE UPS WITH EMPTY BATTERY SLOTS FOR INTERNAL BATTERIES WITH/WITHOUT MBP 380/400/415V AC IN–380/400/415V AC OUT UPS SYSTEM SITE PLANNING DATA																
MAINS INPUT (SINGLE MAINS): 380/400/415V AC, 50HZ 3PH, WYE 4 WIRE+G				BYPASS INPUT: 380/400/415V AC, 50HZ, 3PH, WYE, 4 WIRE+G				OUTPUT: 380/400/415V AC, 50HZ, 3PH, 4 WIRE+G								
MAINS INPUT (DUAL MAINS): 380/400/415V AC, 50HZ 3PH, WYE, 3 WIRE+G				NOMINAL DC VOLTAGE: 480V DC, 40 BLOCKS, 9AH, VRLA 12V												
UPS RATING (kW)	UPS SKU NUMBER	UPS INTERNAL BATTERY STRING		APPLICABLE MAINTENANCE BYPASS CABINET SKU NUMBER	APPLICABLE BATTERY CABINET SKU NUMBERS	NOMINAL MAINS INPUT CURRENT (A) @380/400/ 415V AC	MAXIMUM INPUT CURRENT (A) @380/400/ 415V AC	NOMINAL BYPASS INPUT CURRENT		UPS / SYSTEM OUTPUT CURRENT (A) @380/400/ 415V AC	BATTERY CURRENT (40 BLOCKS) (A DC)		UPS WITHOUT MBC–RECOMMENDED UPSTREAM BREAKER In (A)/Ir (A)/ Im (A) FIXED (MAKE : SCHNEIDER ELECTRIC)			
													MAINS INPUT		BYPASS INPUT	
		STRINGS INCLUDED	MAXIMUM CAPACITY					BREAKER MODEL	In/Ir/ Im FIXED(A)		BREAKER MODEL	In/Ir/ Im FIXED(A)				
20	GVSUPS20K0B4HS	0	4	GVSBPSU10K20H	GVSMODBC6 (MAXIMUM BATTERY STRING CAPACITY–6)	32/30/29	38/36/35	31/29/28	53/50/48	30/29/28	43	54	LV429674	40/40/500	LV429675	32/32/400
30	GVSUPS30K0B4HS			GVSBPSU20K60H		47/45/43	57/54/52	46/44/42	79/75/72	46/43/42	65	81	LV429672	63/63/500	LV429673	50/50/500
40	GVSUPS40K0B4HS			63/60/58		76/72/69	61/58/56	105/100/96	61/58/56	87	109	LV429671	80/80/640	LV429672	63/63/500	
50	GVSUPS50K0B4HS			79/75/72		91/90/87	77/73/70	131/125/120	76/72/70	109	136	LV429670	100/100/800	LV429671	80/80/640	

MAINTENANCE BYPASS PANEL (MBP) SWITCHGEAR DETAILS (MAKE: SCHNEIDER ELECTRIC)			
DEVICE ID/ MBP SKU	GVSBP5U10K30H	GVSBP5U20K60H	GVSBP5U80K120H
UIB / SSIB/ UOB/SIB/ MBB	80A, 4P LOAD SWITCH (INS80 MG)	160A, 4P LOAD SWITCH (INS160 MG)	250A, 4P LOAD SWITCH (INS250 MG)

GALAXY VS 10–50KW 2+0 2 MODULE UPS WITH EMPTY BATTERY SLOTS FOR INTERNAL BATTERIES WITH/WITHOUT MBP 380/400/415V AC IN–380/400/415V AC OUT UPS SYSTEM SITE PLANNING DATA																			
MAINS INPUT (SINGLE MAINS): 380/400/415V AC, 50HZ 3PH, WYE, 4 WIRE+G						BYPASS INPUT: 380/400/415V AC, 50HZ, 3PH, WYE, 4 WIRE+G						OUTPUT: 380/400/415V AC, 50HZ, 3PH, 4 WIRE+G							
MAINS INPUT (DUAL MAINS): 380/400/415V AC, 50HZ 3PH, WYE, 3 WIRE+G						NOMINAL DC VOLTAGE: 480V DC, 40 BLOCKS, 9AH, VRLA 12V													
UPS RATING (kW)	UPS SKU NUMBER	UPS INTERNAL BATTERY STRING		APPLICABLE MAINTENANCE BYPASS CABINET SKU NUMBER	APPLICABLE BATTERY CABINET SKU NUMBERS	SYSTEM LEVEL		INDIVIDUAL UPS LEVEL		NOMINAL BYPASS INPUT CURRENT		INDIVIDUAL UPS OUTPUT CURRENT (A) ●380/400/ 415V AC	SYSTEM OUTPUT CURRENT (A) ●380/400/ 415V AC	BATTERY CURRENT (40 BLOCKS) (A DC)		RECOMMENDED UPSTREAM SYSTEM MAINS INPUT BREAKER In (A)/Ir (A)/ Im (A) FIXED (MAKE : SCHNEIDER ELECTRIC) ⚠		RECOMMENDED UPSTREAM SYSTEM BYPASS INPUT BREAKER In (A)/Ir (A)/ Im (A) FIXED (MAKE : SCHNEIDER ELECTRIC) ⚠	
						NOMINAL MAINS INPUT CURRENT (A) ●380/400/ 415V AC	MAXIMUM INPUT CURRENT (A) ●380/400/ 415V AC	NOMINAL MAINS INPUT CURRENT (A) ●380/400/ 415V AC	MAXIMUM INPUT CURRENT (A) ●380/400/ 415V AC	PHASE CURRENT (A) ●380/400/41 5 AC	NEUTRAL CURRENT (A) ●380/400/ 415V AC			FULL LOAD CURRENT ●NOMINAL VOLTAGE (480V DC)	FULL LOAD CURRENT ●EOD VOLTAGE (384V DC)	BREAKER MODEL	In/Ir/Im FIXED(A)	BREAKER MODEL	In/Ir/Im FIXED(A)
		STRINGS INCLUDED	MAXIMUM CAPACITY																
20	GVSUPS20K0B4HS	0	4	GVSBPSU20K60H	GVSMODBC6 (MAXIMUM BATTERY STRING CAPACITY–6)	64/60/58	76/72/70	32/30/29	38/36/35	62/58/86	106/100/96	30/29/28	60/58/56	43	54	LV429671	80/80/640	LV429672	63/63/500
30	GVSUPS30K0B4HS					94/90/86	114/108/104	47/45/43	57/54/52	92/88/84	158/150/144	46/43/42	92/86/84	65	81	LV430671	125/125/1250	LV430670	100/100/800
40	GVSUPS40K0B4HS					126/120/116	152/144/138	63/60/58	76/72/69	122/116/112	210/200/192	61/58/56	122/116/112	87	109	LV430670	160/160/1250	LV430671	125/125/1250
50	GVSUPS50K0B4HS					158/150/144	182/180/174	79/75/72	91/90/87	154/146/140	262/250/240	76/72/70	152/144/140	109	136	LV431671	200/200/ 5–10 x In	LV430670	160/160/1250

MAINTENANCE BYPASS PANEL (MBP) SWITCHGEAR DETAILS (MAKE: SCHNEIDER ELECTRIC)			
DEVICE ID/ MBP SKU	GVSBP4R10K30H	GVSBP4R40K50H	GVSBP4R60K120H
UIBx / UOBx	80A, 4P LOAD SWITCH (INS80 MG)	160A, 4P LOAD SWITCH (INS160 MG)	250A, 4P LOAD SWITCH (INS250 MG)
MBB	160A, 4P LOAD SWITCH (INS160 MG)	250A, 4P LOAD SWITCH (INS250 MG)	630A, 4P LOAD SWITCH (INS630 MG)

NOTES:

1. INSTALLATION SHALL COMPLY WITH ALL APPLICABLE NATIONAL, STATE AND LOCAL CODES.
2. REFER TO PRODUCT INSTALLATION DOCUMENTATION FOR SITE PREPARATIONS.
- △3. FOR PARALLEL SYSTEMS, UPSTREAM CIRCUIT BREAKER INSTANTANEOUS OVERRIDE (II) VALUES MUST NOT BE SET HIGHER THAN 1250 A.

THIS DRAWING AND SPECIFICATIONS HEREIN ARE THE PROPERTY OF SCHNEIDER ELECTRIC AND SHALL NOT BE COPIED, REPRODUCED OR USED IN WHOLE OR IN PART, AS THE BASIS FOR THE MANUFACTURE OR SALE OF ITEMS WITHOUT WRITTEN PERMISSION FROM SCHNEIDER ELECTRIC. THIS DRAWING IS BASED UPON LATEST AVAILABLE INFORMATION AND IS SUBJECT TO CHANGE WITHOUT NOTICE.

**Schneider**  
Electric

**TITLE:** GALAXY VS  
Input:380/400/415V AC,3PH,50Hz SINGLE/DUAL FEED  
Output: 380/400/415V AC,3PH,50Hz 20–50kW  
20–100kW 1 MOD/2 MOD N+1 UPS w MBP BATT  
BATTERY SOLUTION AND SITE PLANNING  
**PROJECT:** DRAWINGS **SHEET** 6 OF 6

**DWG NO:** GVS20K0B50HSAIO–SD  
**DRAWN BY:** BALA 08–OCT–21  
**ENGINEER:** S A / C A 08–OCT–21  
**APPROVED BY:** C B / C A 08–OCT–21

**REV.** 2  
**ANGLE**  
**PROJECTION**  
N. A