

SPECIFICATIONS:

Circuit breaker	LV438118, LV438135 or LV438880 (NSX160S DC, 3P)
Maximum configuration	4 hour runtime
Battery Type	Lead-acid
Maximum short circuit level (kA)	10

NOTES:

1. INSTALLATION SHALL COMPLY WITH ALL APPLICABLE NATIONAL, STATE AND LOCAL ELECTRICAL REGULATIONS.
2. REFER TO PRODUCT DOCUMENTATION FOR ADDITIONAL DETAILS PRIOR TO INSTALLATION AND SITE PREPARATION WORK.

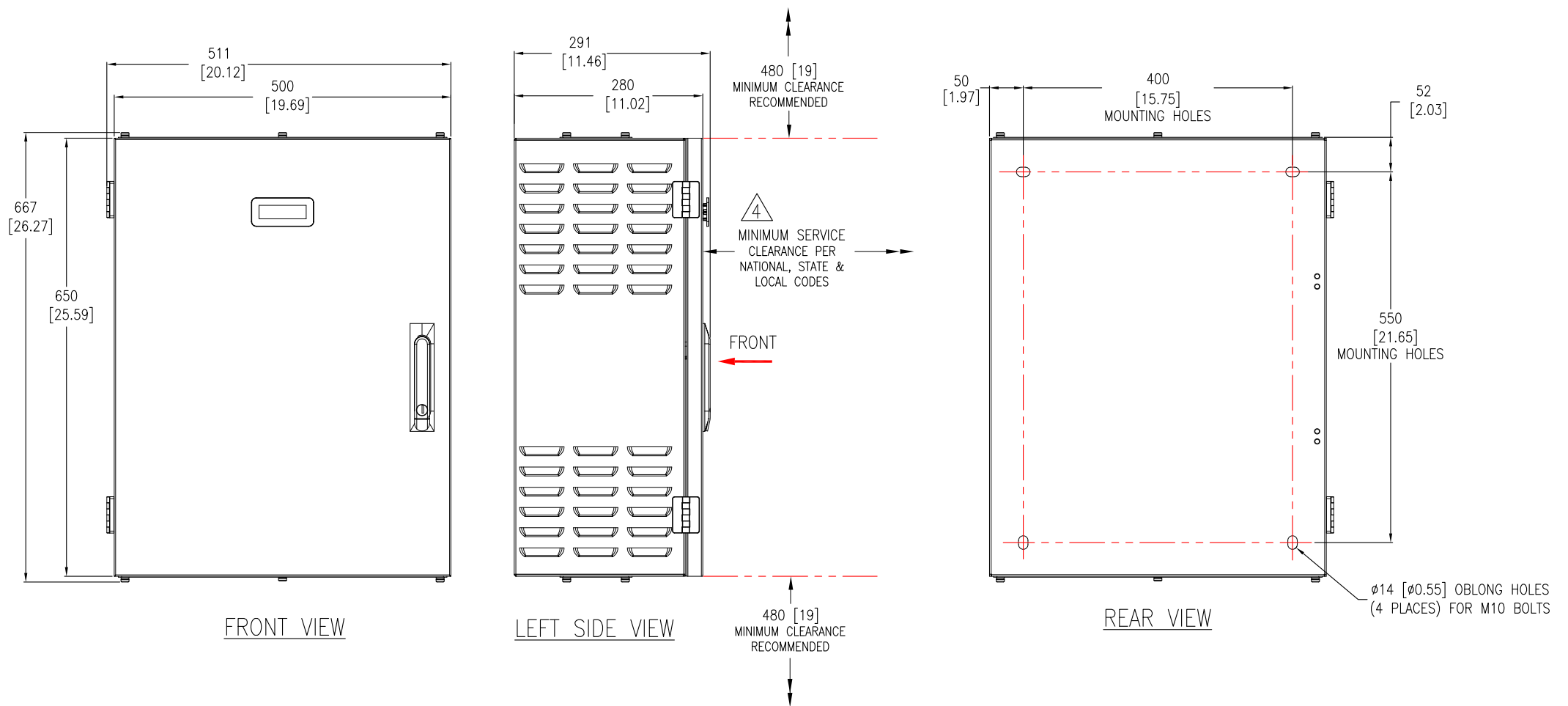
THIS DRAWING AND SPECIFICATIONS HEREIN ARE THE PROPERTY OF SCHNEIDER ELECTRIC AND SHALL NOT BE COPIED, REPRODUCED OR USED IN WHOLE OR IN PART, AS THE BASIS FOR THE MANUFACTURE OR SALE OF ITEMS WITHOUT WRITTEN PERMISSION FROM SCHNEIDER ELECTRIC. THIS DRAWING IS BASED UPON LATEST AVAILABLE INFORMATION AND IS SUBJECT TO CHANGE WITHOUT NOTICE.

Schneider Electric

TITLE: EASY UPS 3S
BATTERY BREAKER BOX
ISOMETRIC VIEW

PROJECT: SUBMITTAL DRAWINGS SHEET 1 OF 4

DWG NO:	E3SOPT007	REV.	0
DRAWN:	JAYAPRAKASH	08-JUN-18	FIRST
ENGINEER:	COMPBELL BAI	09-AUG-18	ANGLE
APPROVED:	FRANK ZHANG	09-AUG-18	PROJECTION



- NOTES:**
1. INSTALLATION SHALL COMPLY WITH ALL APPLICABLE NATIONAL, STATE AND LOCAL ELECTRICAL REGULATIONS.
 2. REFER TO PRODUCT DOCUMENTATION FOR ADDITIONAL DETAILS PRIOR TO INSTALLATION AND SITE PREPARATION WORK.
 3. ALL DIMENSIONS ARE IN MILLIMETERS [INCHES].
 - △ 4. FRONT ACCESS REQUIRED FOR SERVICE.
 5. CONNECT UPS CABLE FROM TOP OR BOTTOM, CONNECT BATTERY CABLE ONLY FROM BOTTOM.
 6. THE WEIGHT OF THE UNIT IS 25 kg [55 lb].
 7. OPERATING TEMPERATURE: 0°C TO 40°C [32°F TO 104°F]
 8. COLOR: RAL 9003 WHITE.
 9. PROTECTION CLASS: IP20.

THIS DRAWING AND SPECIFICATIONS HEREIN ARE THE PROPERTY OF SCHNEIDER ELECTRIC AND SHALL NOT BE COPIED, REPRODUCED OR USED IN WHOLE OR IN PART, AS THE BASIS FOR THE MANUFACTURE OR SALE OF ITEMS WITHOUT WRITTEN PERMISSION FROM SCHNEIDER ELECTRIC. THIS DRAWING IS BASED UPON LATEST AVAILABLE INFORMATION AND IS SUBJECT TO CHANGE WITHOUT NOTICE.

Schneider Electric

TITLE: EASY UPS 3S
BATTERY BREAKER BOX
GENERAL ARRANGEMENT

DWG NO: E3SOPT007

REV. 0

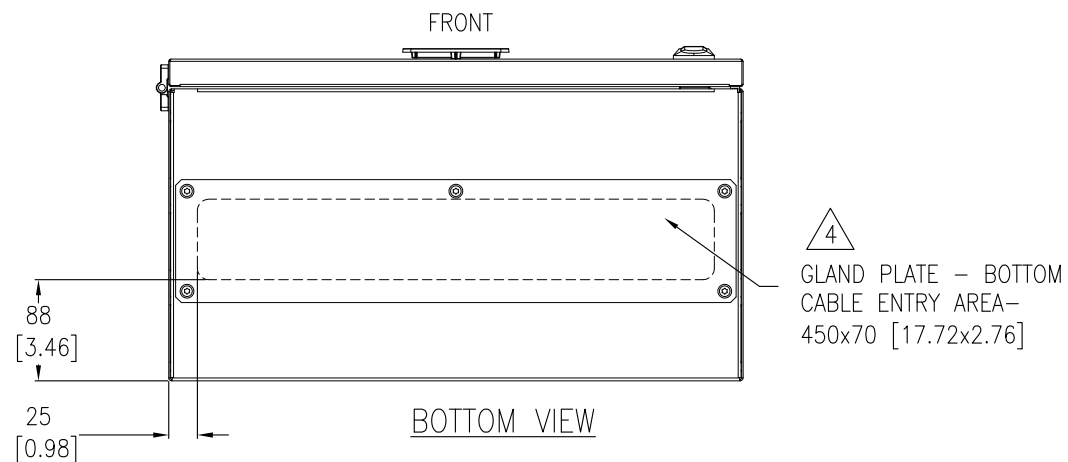
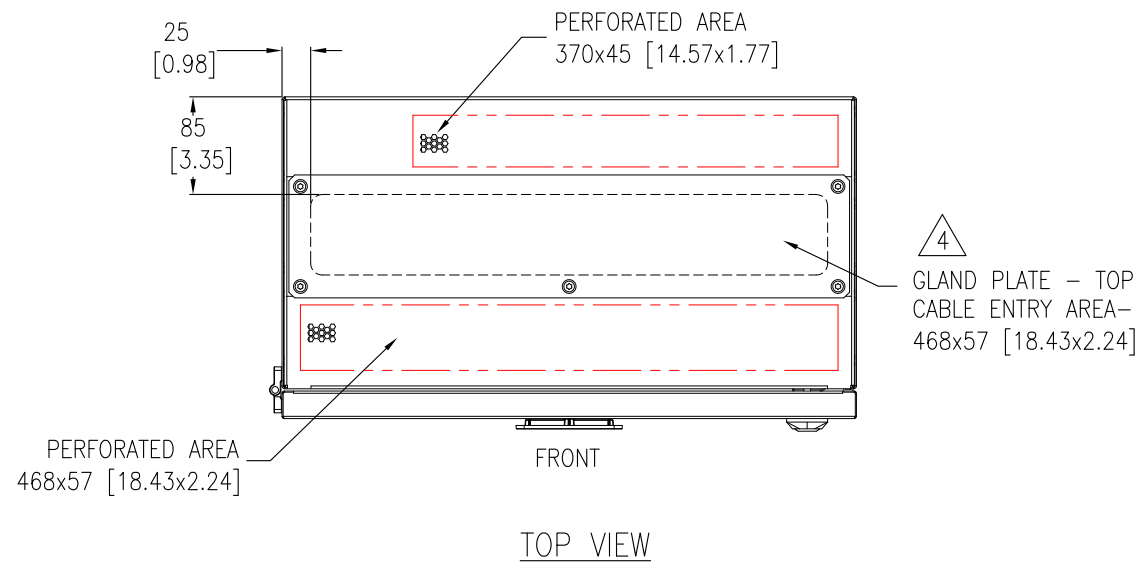
DRAWN: JAYAPRAKASH 08-JUN-18

ENGINEER: COMPELL BAI 09-AUG-18

APPROVED: FRANK ZHANG 09-AUG-18

PROJECT: SUBMITTAL DRAWINGS SHEET 2 OF 4

FIRST
ANGLE
PROJECTION



NOTES:

1. INSTALLATION SHALL COMPLY WITH ALL APPLICABLE NATIONAL, STATE AND LOCAL ELECTRICAL REGULATIONS.
2. REFER TO PRODUCT DOCUMENTATION FOR ADDITIONAL DETAILS PRIOR TO INSTALLATION AND SITE PREPARATION WORK.
3. ALL DIMENSIONS ARE IN MILLIMETERS [INCHES].
- △ 4. DRILL/PUNCH HOLES IN PLATE. REMOVE PLATE FROM CABINET BEFORE DRILLING/PUNCHING.
USE APPROPRIATE CABLE PROTECTION AROUND HOLE BEFORE CABLING IS INSTALLED.

THIS DRAWING AND SPECIFICATIONS HEREIN ARE THE PROPERTY OF SCHNEIDER ELECTRIC AND SHALL NOT BE COPIED, REPRODUCED OR USED IN WHOLE OR IN PART, AS THE BASIS FOR THE MANUFACTURE OR SALE OF ITEMS WITHOUT WRITTEN PERMISSION FROM SCHNEIDER ELECTRIC. THIS DRAWING IS BASED UPON LATEST AVAILABLE INFORMATION AND IS SUBJECT TO CHANGE WITHOUT NOTICE.

Schneider
Electric

TITLE: EASY UPS 3S
BATTERY BREAKER BOX
TOP AND BOTTOM VIEWS

DWG NO: E3SOPT007

REV. 0

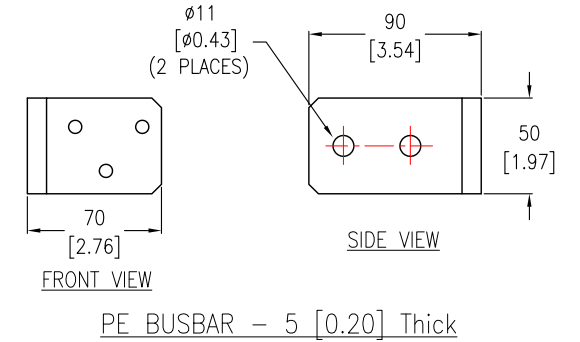
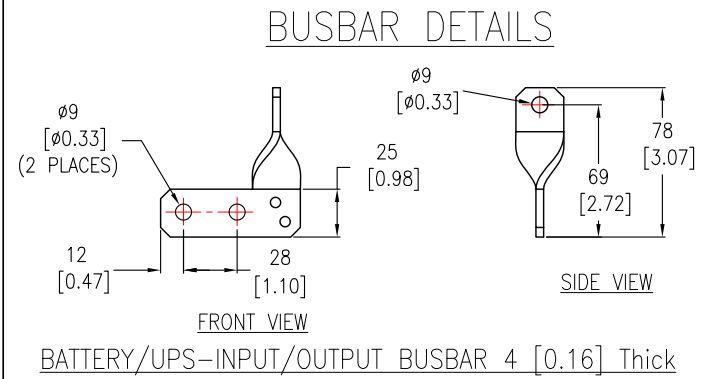
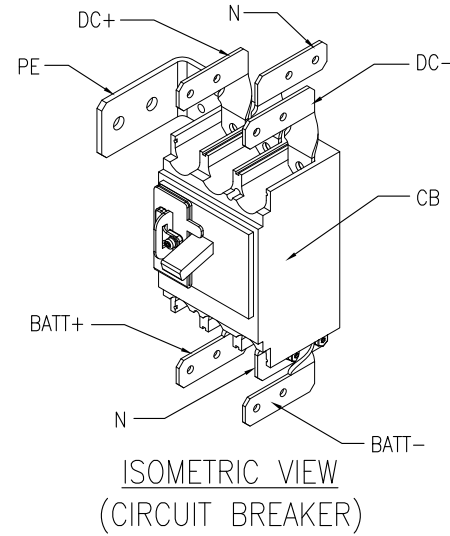
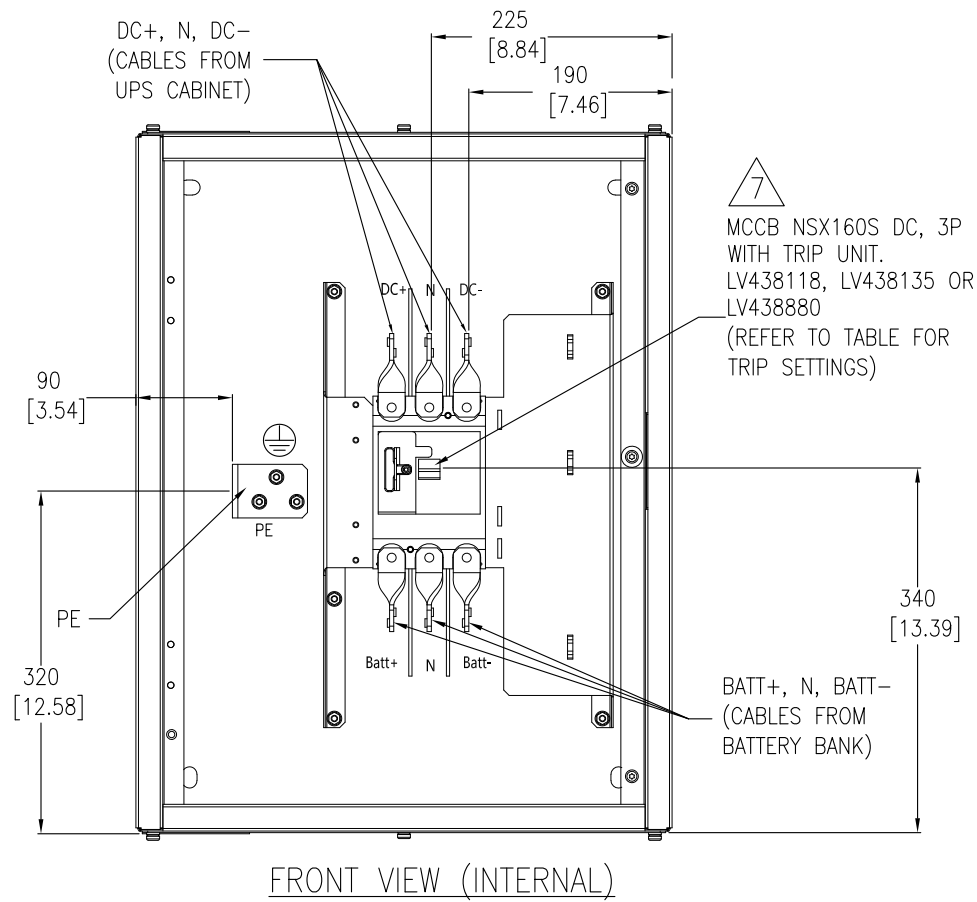
DRAWN: JAYAPRAKASH 08-JUN-18

ENGINEER: COMPELL BAI 09-AUG-18

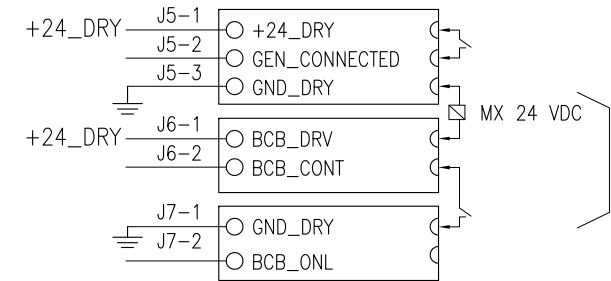
APPROVED: FRANK ZHANG 09-AUG-18

PROJECT: SUBMITTAL DRAWINGS SHEET 3 OF 4

FIRST
ANGLE
PROJECTION



SIGNAL CABLE CONNECTION



UPS Rating (kW)	Trip Setting (A)	
	I _r	I _m
10	112	1250 (fixed)
15	112	
20	112	
30	112	
40	144	



Recommended Cable Sizes

UPS Rating		10kW	15kW	20kW	30kW	40kW
Copper/Aluminium	Battery +/- (mm ²)	8mm ²	8mm ²	25mm ²	25mm ²	35mm ²
	Battery PE (mm ²)	6mm ²	6mm ²	10mm ²	16mm ²	16mm ²

NOTES:

1. INSTALLATION SHALL COMPLY WITH ALL APPLICABLE NATIONAL, STATE AND LOCAL ELECTRICAL REGULATIONS.
2. REFER TO PRODUCT DOCUMENTATION FOR ADDITIONAL DETAILS PRIOR TO INSTALLATION AND SITE PREPARATION WORK.
3. ALL DIMENSIONS ARE IN MILLIMETERS [INCHES].

△ 4. CABLE SIZES ARE BASED ON TABLE B.52.5 OF IEC 60364-5-52 WITH THE FOLLOWING ASSERTIONS:

- a) 90°C CONDUCTORS.
- b) AN AMBIENT TEMPERATURE OF 30°C [86°F].
- c) USE OF COPPER OR ALUMINIUM CONDUCTORS.
- d) INSTALLATION METHOD 'C'

IF THE AMBIENT TEMPERATURE IS GREATER THAN 30°C [86°F], LARGER CONDUCTORS ARE TO BE SELECTED IN ACCORDANCE WITH THE CORRECTION FACTORS OF THE IEC.

5. SOME STRUCTURAL DETAILS HAVE BEEN OMITTED FOR THE PURPOSE OF CLARITY.

THIS DRAWING AND SPECIFICATIONS HEREIN ARE THE PROPERTY OF SCHNEIDER ELECTRIC AND SHALL NOT BE COPIED, REPRODUCED OR USED IN WHOLE OR IN PART, AS THE BASIS FOR THE MANUFACTURE OR SALE OF ITEMS WITHOUT WRITTEN PERMISSION FROM SCHNEIDER ELECTRIC. THIS DRAWING IS BASED UPON LATEST AVAILABLE INFORMATION AND IS SUBJECT TO CHANGE WITHOUT NOTICE.

Schneider Electric

TITLE: EASY UPS 3S BATTERY BREAKER BOX INTERNAL VIEW, BUSBARS & INTERFACE DETAILS
PROJECT: SUBMITTAL DRAWINGS SHEET 4 OF 4

DWG NO: E3SOPT007 REV: 0
DRAWN: JAYAPRAKASH 08-JUN-18
ENGINEER: CAMPBELL BAI 09-AUG-18
APPROVED: FRANK ZHANG 09-AUG-18
FIRST ANGLE PROJECTION