

SERVICE BY-PASS PANEL SPECIFICATION

1. SYSTEM MAINS SUPPLY RATING

Mains voltage : 3x400V/230V at 50Hz
Control Voltage : 230V at 50Hz
Short-circuit current I_c : ☐ 15 kA
☐ 25 kA
☒ 30 kA
☐ 45 kA

2. SYSTEM EARTHING

The system earthing is TN-S with 5 wires at both inlets and outlets

3. STANDARDS

The Service By-pass Panel is built according to CE compliance

4. ENVIRONMENTS

The assembly is made for an ambient temperature of : ☒ Max: +40°C and ☒ Min : 0°C

5. ENCLOSURE

The enclosure of the assembly is : ☒ IP30
The assembly material is : ☒ Steel with Surface coating
☐ Plastic without Surface coating

6. POSITIONING

The assembly is made for indoor installation on : ☐ Floor ☒ Wall

7. DIMENSIONS AND WEIGHTS

Height : 460 mm
Width : 400 mm
Depth : 175 mm
Weight : 11 kg

8. CABLE ENTRIES

Inlets:
☒ Top, Left side
☐ Top, Right side
☐ Bottom, Left side
☒ Bottom, Right side
☐ Back side

Outlets:
☐ Top, Left side
☒ Top, Right side
☒ Bottom, Left side
☐ Bottom, Right side

9. CONNECTIONS

Power Circuits :
Input Output
☒ ☒ Component terminals
☐ ☐ Cable plug

Control Circuits :
☒ Terminals


THIS DRAWING AND SPECIFICATIONS HEREIN ARE THE PROPERTY OF AMERICAN POWER CONVERSION AND SHALL NOT BE COPIED, REPRODUCED OR USED IN WHOLE OR IN PART, AS THE BASIS FOR THE MANUFACTURE OR SALE OF ITEMS WITHOUT WRITTEN PERMISSION FROM APC. THIS DRAWING IS BASED UPON LATEST AVAILABLE INFORMATION AND IS SUBJECT TO CHANGE WITHOUT NOTICE.

TITLE: SMART-UPS VT 30-40kVA
MAINTENANCE BYPASS PANEL
INPUT 3x400/230V
SPECIFICATION

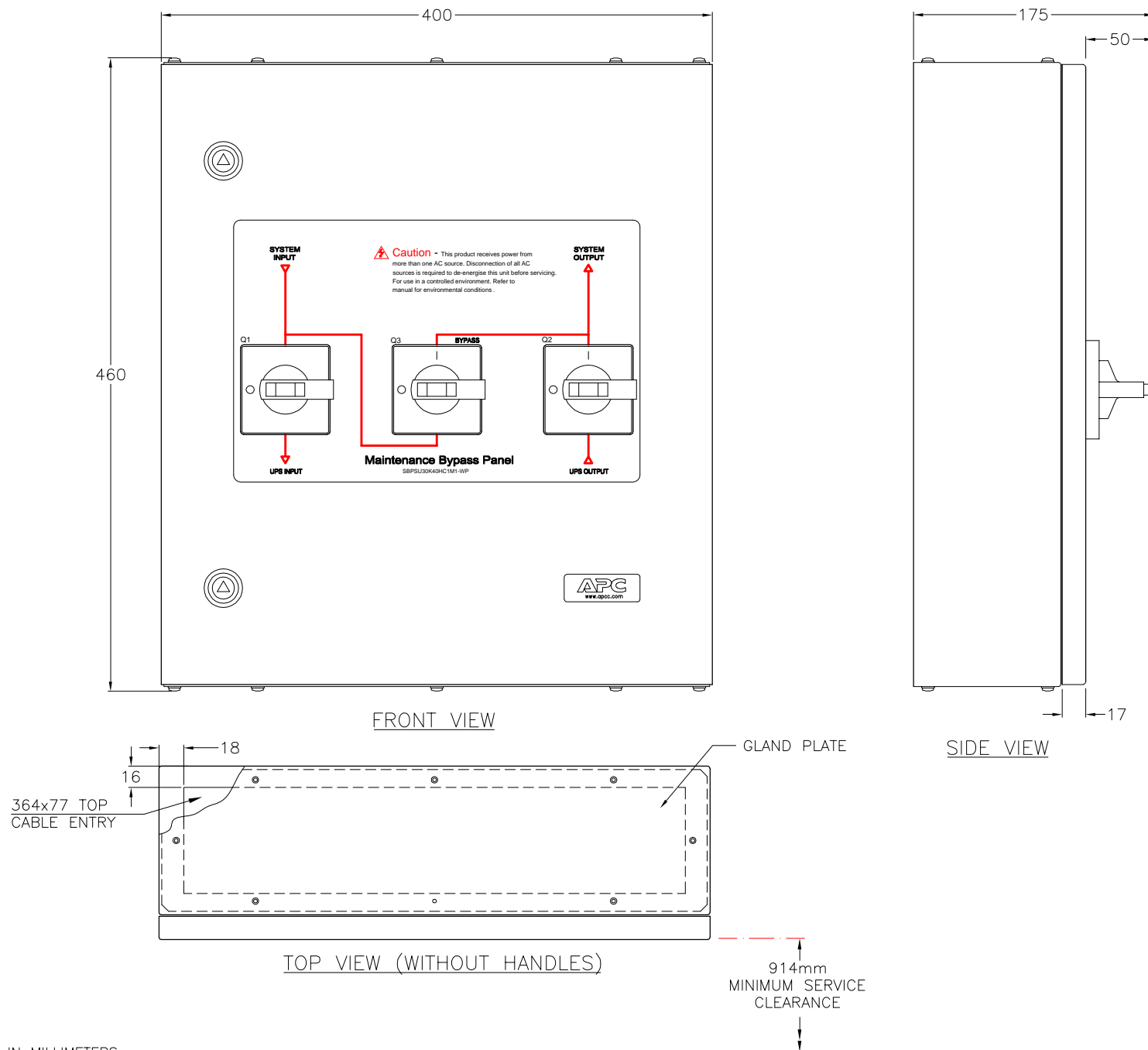
PROJECT: SUBMITTAL DRAWINGS SHEET 1 OF 6

DWG NO: SBPSU30K40HC1M1-WP-SP

DRAWN BY: BALAMURUGAN	20/04/06
CHECKED BY: P.ORMROD/P.RAUN	20/04/06
ENGINEER: S.WAGH	20/04/06

REV. —
PROJECTION


APC[®]
AMERICAN POWER CONVERSION
132 FAIRGROUNDS RD
WEST KINGSTON, RI 02892



NOTES:

1. ALL DIMENSIONS ARE IN MILLIMETERS
2. MINIMUM SERVICE CLEARANCE IS 800mm
3. CABLE ENTRY IS TOP OR BOTTOM OF UNIT
4. WEIGHT OF UNIT IS 11 Kg
5. INSTALLATION MUST COMPLY WITH ALL NATIONAL AND LOCAL ELECTRICAL REGULATIONS.

THIS DRAWING AND SPECIFICATIONS HEREIN ARE THE PROPERTY OF AMERICAN POWER CONVERSION AND SHALL NOT BE COPIED, REPRODUCED OR USED IN WHOLE OR IN PART, AS THE BASIS FOR THE MANUFACTURE OR SALE OF ITEMS WITHOUT WRITTEN PERMISSION FROM APC. THIS DRAWING IS BASED UPON LATEST AVAILABLE INFORMATION AND IS SUBJECT TO CHANGE WITHOUT NOTICE.

TITLE: SMART-UPS VT 30-40kVA
MAINTENANCE BYPASS PANEL
INPUT 3x400/230V
MAIN MECHANICAL

DWG NO: SBPSU30K40HC1M1-WP-MM1

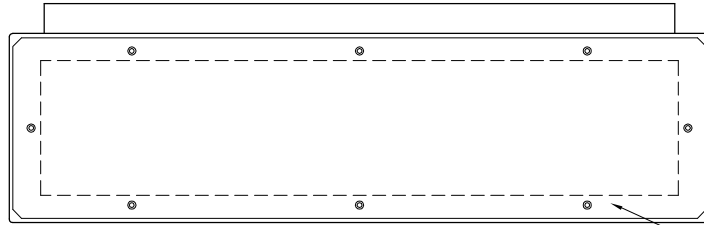
DRAWN BY: BALAMURUGAN	20/04/06
CHECKED BY: P.ORMROD/P.RAUN	20/04/06
ENGINEER: S.WAGH	20/04/06

REV. —

PROJECTION

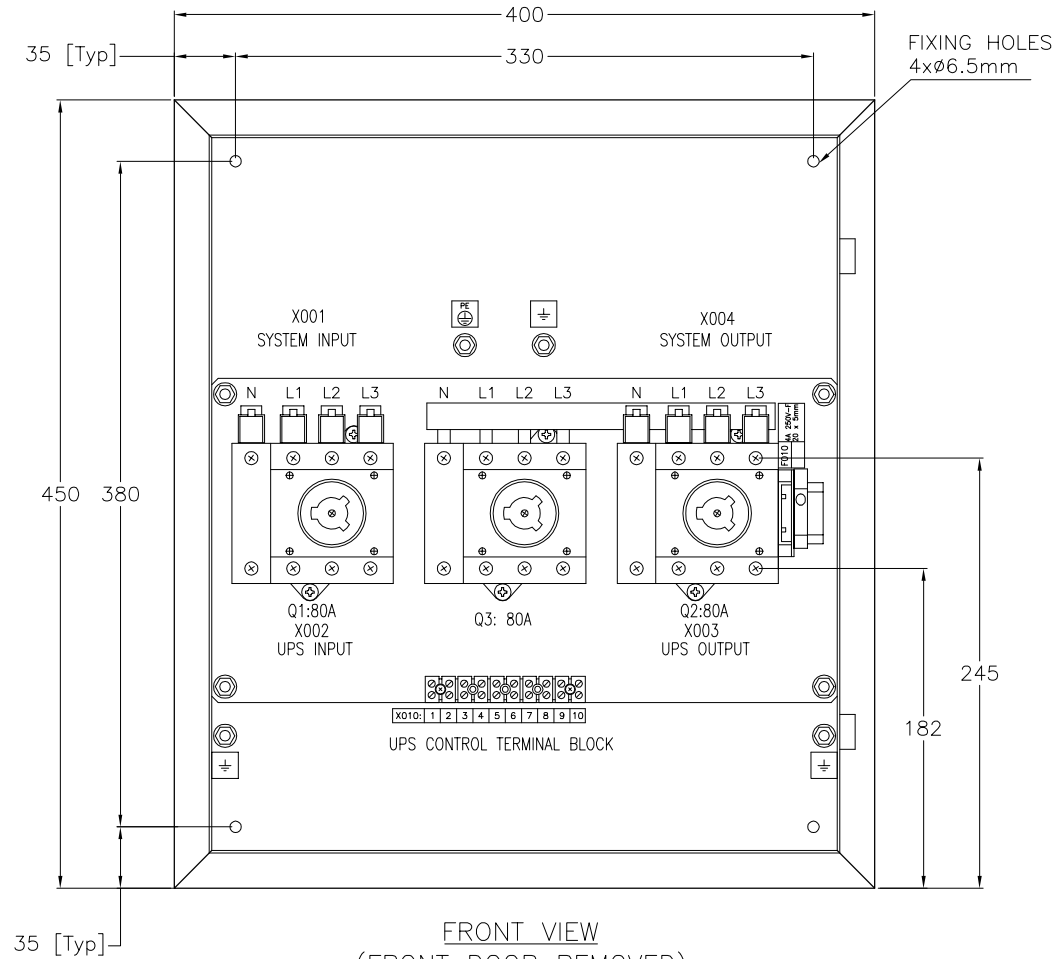
APC[®]

AMERICAN POWER CONVERSION
132 FARBGROUNDS RD
WEST KINGSTON, RI 02892

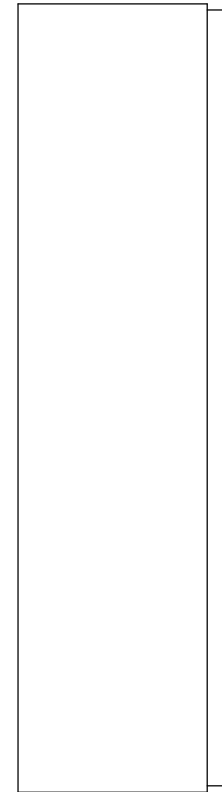


BOTTOM VIEW

GLAND PLATE



FRONT VIEW
(FRONT DOOR REMOVED)



SIDE VIEW

NOTES:

1. ALL DIMENSIONS ARE IN MILLIMETERS
2. INSTALLATION MUST COMPLY WITH ALL NATIONAL AND LOCAL ELECTRICAL REGULATIONS.

THIS DRAWING AND SPECIFICATIONS HEREIN ARE THE PROPERTY OF AMERICAN POWER CONVERSION AND SHALL NOT BE COPIED, REPRODUCED OR USED IN WHOLE OR IN PART, AS THE BASIS FOR THE MANUFACTURE OR SALE OF ITEMS WITHOUT WRITTEN PERMISSION FROM APC. THIS DRAWING IS BASED UPON LATEST AVAILABLE INFORMATION AND IS SUBJECT TO CHANGE WITHOUT NOTICE.

TITLE: SMART-UPS VT 30-40kVA
MAINTENANCE BYPASS PANEL
INPUT 3x400/230V
MECHANICAL-INTERNAL VIEW

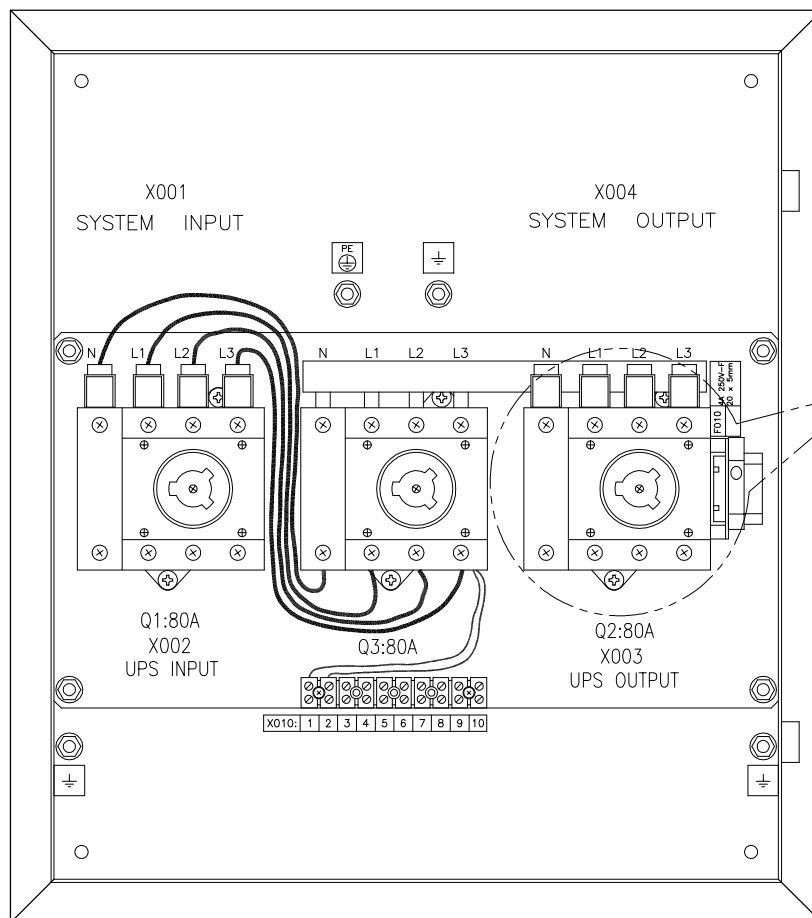
PROJECT: SUBMITTAL DRAWINGS

SHEET 3 OF 6

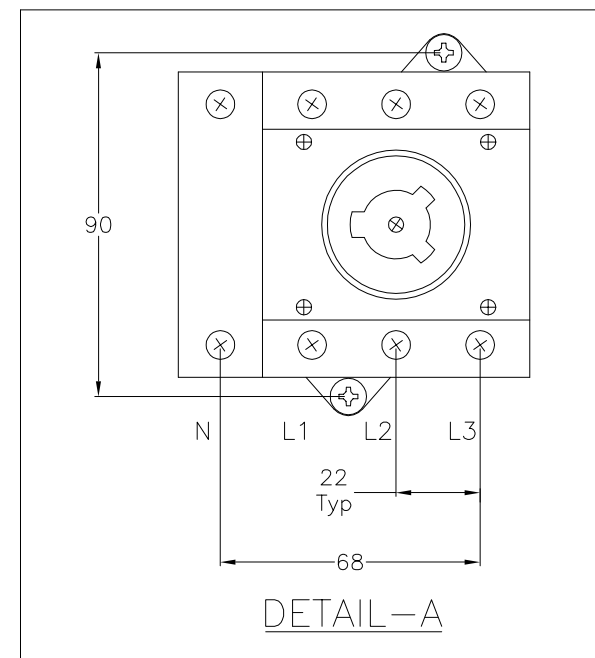
DWG NO: SBPSU30K40HC1M1-WP-MM2
DRAWN BY: BALAMURUGAN
CHECKED BY: P.ORMROD/P.RAUN
ENGINEER: S.WAGH

REV. —
PROJECTION
20/04/06
20/04/06
20/04/06

APC
AMERICAN POWER CONVERSION
132 FARGROUNDS RD
WEST KINGSTON, RI 02892



FRONT VIEW
FRONT COVER REMOVED



DETAIL-A

NOTES:

1. ALL DIMENSIONS ARE IN MILLIMETERS
2. ALL CABINETS ARE SHOWN WITHOUT DOORS AND MOUNTING BRACKET
3. CABLE ENTRY IS TOP OR BOTTOM OF UNIT
4. INSTALLATION MUST COMPLY WITH ALL NATIONAL AND LOCAL ELECTRICAL REGULATIONS.

THIS DRAWING AND SPECIFICATIONS HEREIN ARE THE PROPERTY OF AMERICAN POWER CONVERSION AND SHALL NOT BE COPIED, REPRODUCED OR USED IN WHOLE OR IN PART, AS THE BASIS FOR THE MANUFACTURE OR SALE OF ITEMS WITHOUT WRITTEN PERMISSION FROM APC. THIS DRAWING IS BASED UPON LATEST AVAILABLE INFORMATION AND IS SUBJECT TO CHANGE WITHOUT NOTICE.

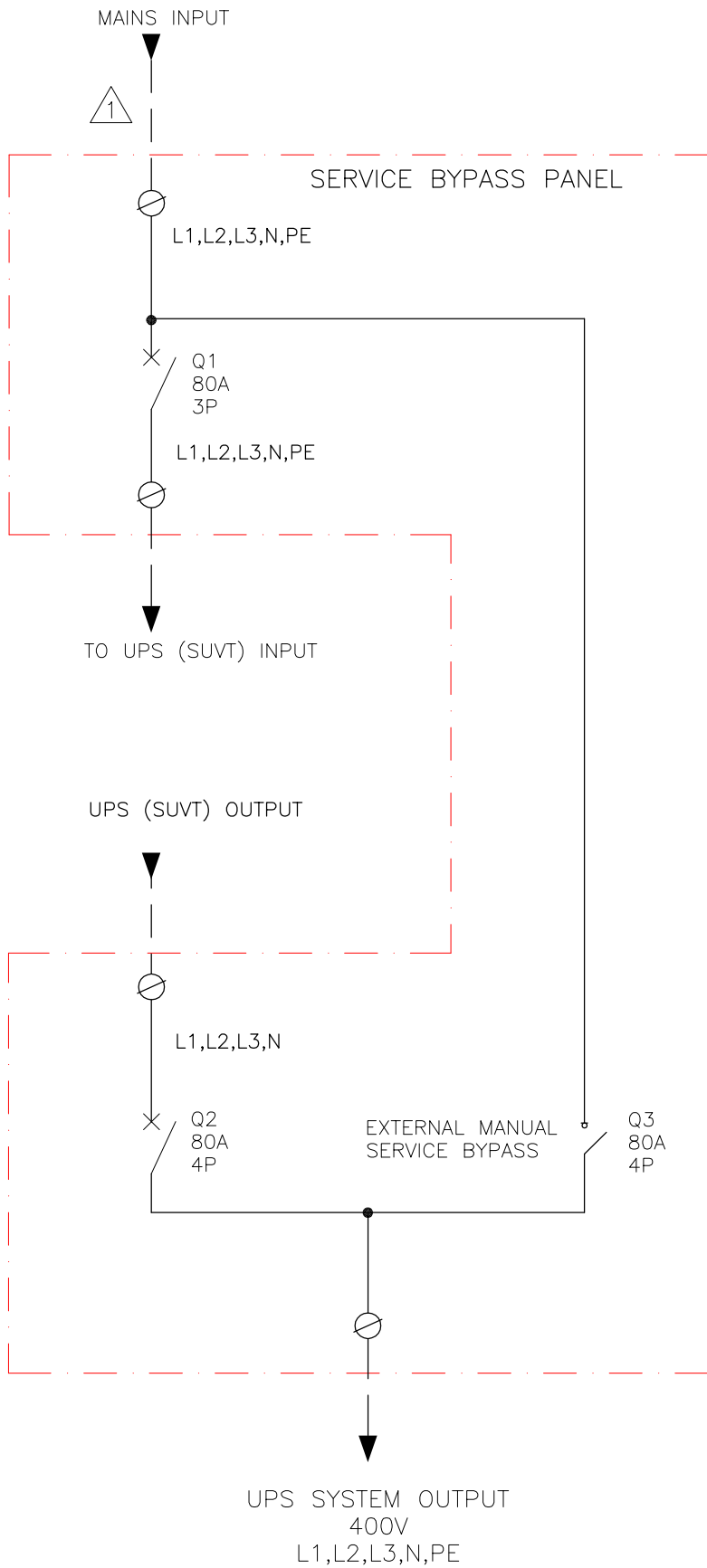
TITLE: SMART-UPS VT 30-40kVA
MAINTENANCE BYPASS PANEL
INPUT 3x400/230V
INTERNAL CABLE CONNECTIONS

DWG NO: SBPSU30K40HC1M1-WP-ME
DRAWN BY: BALAMURUGAN
CHECKED BY: P.ORMROD/P.RAUN
ENGINEER: S.WAGH

REV. —
20/04/06
20/04/06
20/04/06

PROJECTION
FIRST ANGLE

APC
AMERICAN POWER CONVERSION
132 FARGROUNDS RD
WEST KINGSTON, RI 02892



NOTE:

DASHED (— — —) LINES OUTSIDE OF SBP UNIT, REPRESENT CABLING PROVIDED BY OTHERS.

THIS DRAWING AND SPECIFICATIONS HEREIN ARE THE PROPERTY OF AMERICAN POWER CONVERSION AND SHALL NOT BE COPIED, REPRODUCED OR USED IN WHOLE OR IN PART, AS THE BASIS FOR THE MANUFACTURE OR SALE OF ITEMS WITHOUT WRITTEN PERMISSION FROM APC. THIS DRAWING IS BASED UPON LATEST AVAILABLE INFORMATION AND IS SUBJECT TO CHANGE WITHOUT NOTICE.

TITLE: SMART-UPS VT 30-40kVA
MAINTENANCE BYPASS PANEL
INPUT 3x400/230V
POWER CIRCUIT

PROJECT: SUBMITTAL DRAWINGS SHEET 5 OF 6

DWG NO: SBPSU30K40HC1M1-WP-ES1

DRAWN BY: BALAMURUGAN

CHECKED BY: P.ORMROD/P.RAUN

ENGINEER: S.WAGH

REV. —

20/04/06

20/04/06

20/04/06



CONTROL CIRCUIT

UPS

J106

1
2
3
4
5
6
7
8

COMMUNICATION
WIRING

X010

1
2
3
4
5
6
7
8
9
10

CONTROL TERMINAL
BLOCK

Q3

NOTE:
DASHED (_ _ _) LINES OUTSIDE OF SBP UNIT, REPRESENT CABLING PROVIDED BY OTHERS.