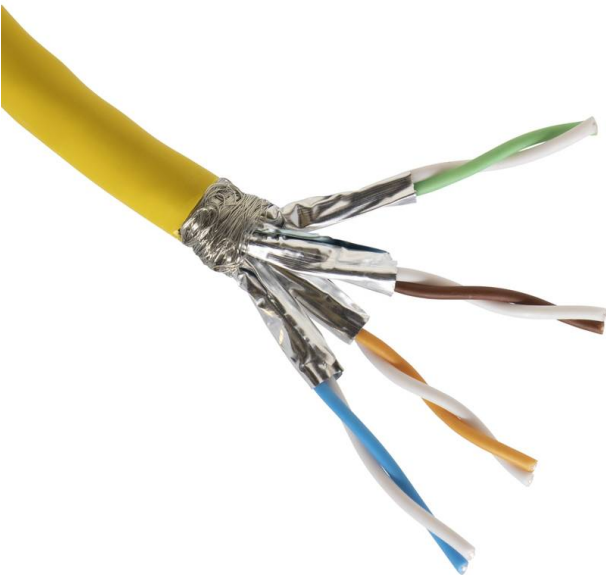


Excel Solid Cat7A Cable S/FTP Dca LS0H 500 m Reel  
Yellow

Item Code: 100-910



- ✕ Category 7A Performance to 1000 MHz
- ✕ Individual foil pairs with overall braid screen
- ✕ High performance design
- ✕ 25 year system warranty
- ✕ Sequential metre markings
- ✕ Euroclass Dca-s2-d2-a1
- ✕ CIBSE TM65 Embodied Carbon: 266.250 kg CO2e

Product Overview

The Excel Category 7A Screened S/FTP LS0H Cable is designed and manufactured to meet and exceed the ISO, CENELEC and TIA standards. This delivers Class FA link and channel performance supporting all applications detailed and proposed within the standards. This superior performance cable is ETL Component Verified.

Each cable consists of 4 pairs individually wrapped in a covering of high quality, strong, aluminium/polyester foil tape providing an individual screen for each pair. These sub units are then cabled together, with the pairs set to different lay lengths to ensure optimum performance, an overall braid screen is applied to provide further immunity to outside noise and to mitigate any risk of alien cross talk.

The print legend on the cable now includes information regarding the DOP number, Test and Classification of the cable for traceability.

Product Specifications

Feature	Values
Conductor surface	Bare
Diameter of conductor	0.58 mm
AWG size	23
Conductor category	Class 1 = solid
Total number of cores	8

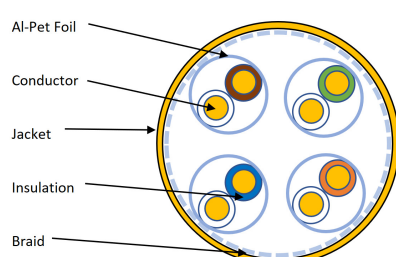
# Excel Solid Cat7A Cable S/FTP Dca LS0H 500 m Reel Yellow

Item Code: 100-910

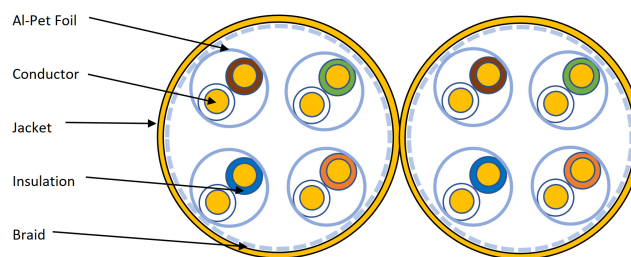


Stranding element	Pairs
Specification core insulation	Polyethylene (PE)
Core identification	Colour
Overall screening	Braiding
Conductor screening	Foil
Outer sheath material	Copolymer, thermoplastic (LS0H)
Outer sheath colour	Yellow
Flame retardant according to IEC 60332-1-2	yes
Reaction-to-fire class according to EN 13501-6	Dca
Smoke development class according to EN 13501-6	s2
Euro class flaming droplets/particles according to EN 13501-6	d2
Euro class acidity according to EN 13501-6	a1
Outer diameter approx.	7.8 mm
Operating Temperature Range	-25...70 °C
Category	7A (IEC)
NVP value	76 %

## Cross-section diagram



Single cable



Dual cable

# Excel Solid Cat7A Cable S/FTP Dca LS0H 500 m Reel Yellow

Item Code: 100-910



## Cable specifications

Features	Values
Dielectric strength	2.5kV for 2s
Maximum pulling load	60N/6.1KgF
MBR during installation	8x cable OD
MBR installed	4x cable OD

## Standards

Applicable standard	Subject
ISO/IEC 11801-1:2017	Information technology - Generic cabling for customer premises: Part 1 General Requirements
IEC 61156-5:2020	Multicore and symmetrical pair/quad cables for digital communications - Part 5: Symmetrical pair/quad cables with transmission characteristics up to 1 000 MHz - Horizontal floor wiring - Sectional specification
EN 50173-1:2018	Information technology. Generic cabling systems - General requirements
EN 50173-2:2018	Information technology. Generic cabling systems - Office premises
BS EN 50288-3-1:2013	Multi-element metallic cables used in analogue and digital communication and control. Sectional specification for unscreened cables characterised up to 250 MHz
EN 50399:2011+A1:2016	Common test methods for cables under fire conditions. Heat release and smoke production measurement on cables during flame spread test. Test apparatus, procedures, results
IEC 60332-1-2:2004 + A12:2020	Tests on electric and optical fibre cables under fire conditions. Test for vertical flame propagation for a single insulated wire or cable. Procedure for 1 kW pre-mixed flame
ANSI/TIA 568-D:2015	Balanced Twisted-Pair Telecommunications Cabling and Components Standards
IEC 60754-2:2014	Test on gases evolved during combustion of materials from cables - Part 2: Determination of acidity (by pH measurement) and conductivity
IEC 61034-2:2005+A2:2020	Measurement of smoke density of cables burning under defined conditions - Part 2: Test procedure and requirements
EN 50575:2014 + A1:2016	Power, control and communication cables — Cables for

# Excel Solid Cat7A Cable S/FTP Dca LS0H 500 m Reel Yellow

Item Code: 100-910



general applications in construction works subject to reaction to fire requirements

RoHS-II/-III (2011/65/EU & 2015/863): 2023

Our products, demonstrate full adherence to the regulatory stipulations of the EU Directive 2011/65/EU (RoHS-II) and its corresponding delegated directive 2015/863 (RoHS-III).

WFD: 2023

Compliant to Waste Framework Directive

SCIP: 2023

Compliant - Does Not Contain Substances of Concern In articles as such or in complex objects (Products)

POPs (EU) No 2019/1021

EU Regulation for the restriction of Persistent Organic Pollutants.

## Part Number Table

Part Number	Description
100-910	Excel Solid Cat7A Cable S/FTP Dca LS0H 500 m Reel Yellow
100-910-1000	Excel Solid Cat7A Cable S/FTP Dca LS0H 1000 m Reel Yellow
100-910-GRY	Excel Category 7A Cable S/FTP Dca LS0H 500m Reel - Grey
100-910-VT	Excel Category 7A Cable S/FTP Dca LS0H 500m Reel - Violet
100-911	Excel Dual Cat7A Cable S/FTP Dca LS0H 500 m Reel Yellow
100-912	Excel Category 7A+ Cable S/FTP Eca LS0H 500m Reel - Yellow
190-910	Excel Solid Cat7A Cable S/FTP B2ca LS0H 500 m Reel Yellow
190-910-1000M	Excel Solid Cat7A Cable S/FTP B2ca LS0H 1000 m Reel Yellow
190-910-VT	Excel Solid Cat7A Cable S/FTP B2ca LS0H 500 m Reel Violet
190-912	Excel Solid Cat7A+ Cable S/FTP 22 AWG B2ca LS0H 500 m Reel Yellow

Excel is a world class premium performing end to end infrastructure solution designed, Manufactured, supported and delivered without compromise.

Contact us at [sales@excel-networking.com](mailto:sales@excel-networking.com)



E&OE. Excel is a registered trade name of Mayflex Holdings Ltd.